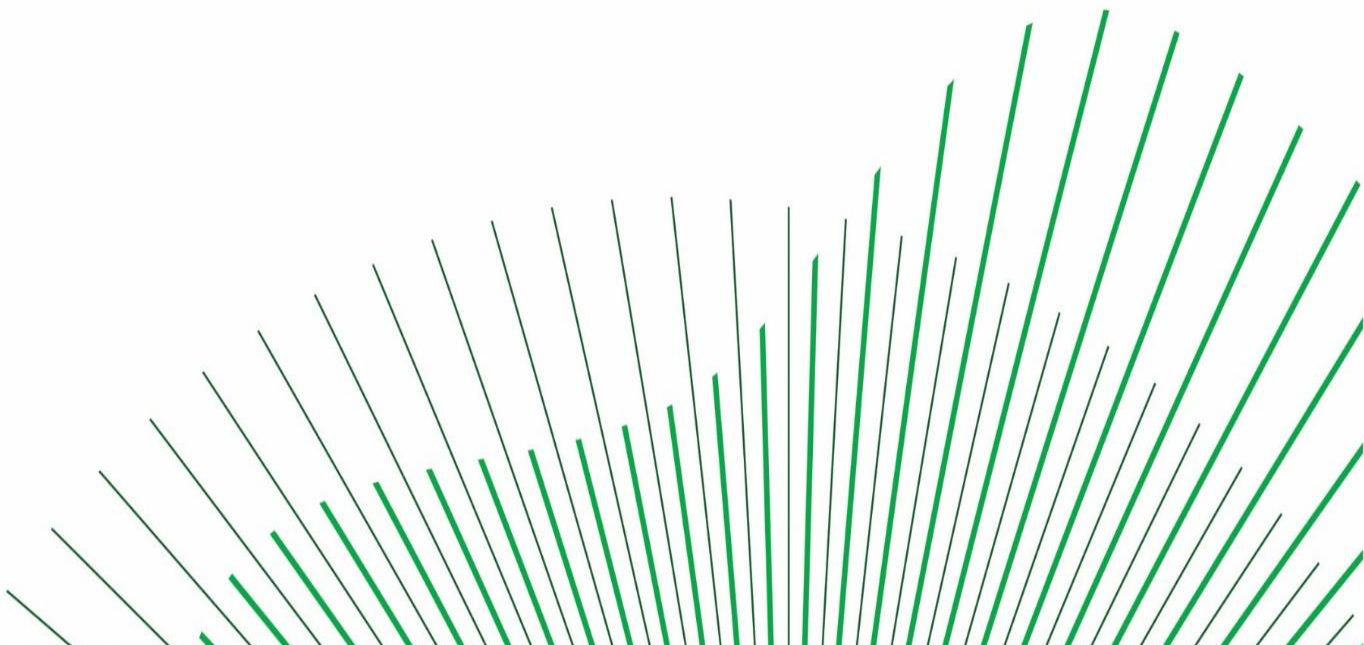


Appendix 1-6- Community Report for the Derryadd Windfarm



Derryadd Wind Farm Community Engagement Report

Dated: March 2025



Contents

Contents

| | |
|---|----|
| Part 1 Introduction | 2 |
| 1.1 Introduction | 2 |
| Part 2 Consultation with the Local Community | 3 |
| 2.1 Notification of Local Representatives | 3 |
| 2.2 Notification of Local Community | 3 |
| 2.3 Community Information Sessions | 4 |
| 2.3.1 Print Advertisement of Community Information Sessions | 4 |
| 2.3.2 Broadcast Advertisement of Public Consultations | 4 |
| 2.3.3 Attendance and Feedback | 4 |
| 2.5 Publication of Final Layout | 5 |
| 2.6 Direct Correspondence and meetings | 5 |
| 2.7 Dedicated Contact Details | 5 |
| 2.8 Project Website | 6 |
| 2.9 Dedicated Community Liaison Officer | 6 |
| 2.10 Engagement with Community Groups | 6 |
| Part 3 Community Input into Proposed Development | 7 |
| 3.1 Community Input | 7 |
| Part 4 Enduring Economic Benefit | 9 |
| 4.1 Enduring Economic Benefit | 9 |
| 4.1.1 Short Term Economic Benefits | 9 |
| 4.1.2 Long Term Economic Benefits | 9 |
| Part 5 Conclusion | 10 |

Part 1 Introduction

1.1 Introduction

This Community Engagement Report has been compiled to document and record the community engagement and public consultation carried out with the local community in respect of the proposed Derryadd Wind Farm development during the pre-planning phase. Bord na Móna Powergen Ltd. has carried out a proactive engagement and consultation programme in relation to the proposed development with local stakeholders, members of the public, residents, and community groups. The objective of the consultations was to ensure that the views and concerns of all were considered, where possible, as part of the project design and Environmental Impact Assessment (EIA) process.

The Engagement and Consultation Programme for the proposed development, has been completed in line with the wind energy industry best practice recommendations and also recommendations set out in various guidelines namely:

1. The Wind Energy Development Guidelines¹ (2006) state that:

“While it is not a mandatory requirement, it is strongly recommended that developers of a wind energy project should engage in active consultation and dialogue with the local community at an early stage in the planning process, ideally prior to submitting a planning application”.

2. Preferred Draft Approach to Wind Energy Development in Ireland² (June 2017) which stated the following with respect to planning applications for wind farms:

“Planning applications must contain a Community Report prepared by the applicant which will specify how the final proposal reflects community consultation. The Community Report must also outline steps taken to ensure that the proposed development will be of enduring economic benefit to the communities concerned”.

3. The Draft Revised Wind Energy Guidelines³ (Department of Housing, Planning and Local Government, 2019) has retained this position stating the following:

“In order to promote the observance of best practice, planning authorities should require applicants to prepare and submit a Community Report with their planning application and a condition on any subsequent planning permission should require developers to carry out the development in accordance with the approved Community Report”.

This Report outlines the consultation and community engagement initiatives undertaken by Bord na Móna Powergen Ltd. prior to the submission of the planning application. It also outlines the main issues identified during this process, how the final proposal reflects community consultation and the steps taken to ensure that the proposed development will be of enduring economic benefit to the communities concerned.

¹ The Department of the Environment, Heritage and Local Government, Wind Energy Planning Guidelines 2006, p. 19

² The Department of Communications, Climate Action and Environment and Department of Housing, Planning, Community and Local Government, Information Note Review of the Wind Energy Development Guidelines 2006 “Preferred Draft Approach”, 2017 p.8

³ The Department of Housing, Planning and Local Government, Draft Revised Wind Energy Development Guidelines 2019, p. 42

Part 2 Consultation with the Local Community

As part of the original planning application (ABP Ref No. 303592-19), extensive consultation and engagement was undertaken to ensure community involvement and stakeholder input. This process encompassed multiple public consultation and community engagement events, community liaison visits to residents and meetings with local residents and interest groups. Feedback was actively sought through various channels enabling a broad spectrum of opinions and concerns to be addressed and ensuring that the local community had an influence on the final proposed plans. The Consultation and Engagement Programme that was implemented for the original planning application continued throughout the preparation of the planning application.

2.1 Notification of Local Representatives

In advance of engagement with the local community, by way of electronic communication in June 2022, Bord na Móna Powergen Ltd. informed County Councillors in Longford for the Municipal District of Ballymahon of the company's intention to develop a wind farm on Derryadd, Derryaroge and Lough Bannow bogs in south Co. Longford. As part of this communication, the Councillors for the above-mentioned Municipal District were invited to attend a briefing session on the 29th of June 2022, in Keenagh Community Centre. The purpose of this briefing session was to provide information on the proposed development in advance of the first round of Community Information Sessions.

In June 2023, by way of electronic communication, Councillors for the above-mentioned Municipal District were issued a map showing the proposed final turbine layout, internal infrastructure and draft amenity plan for the proposed Derryadd Wind Farm and a corresponding cover letter. Councillors were encouraged to contact the Stakeholder Engagement Team in the event they required more information on the project. In addition to informing the Councillors of the above-mentioned Municipal Districts about the proposed development, all TDs representing the Dáil Éireann Constituencies Longford/Westmeath were also sent an electronic communication in June 2022 and June 2023 regarding the proposed development.

2.2 Notification of Local Community

To inform local Residents about the proposed development, the project's Community Liaison Officer distributed a project introductory letter to ca. 300 homes regarding the relaunch of the proposed wind farm to households within a 2km of the proposed development site boundary between 23rd February and 9th March 2022. In addition, house to house calls were also carried out between 1st June and 24th of June 2022 to invite residents to attend the upcoming Community Information Sessions.

2.3 Community Information Sessions

Bord na Móna Powergen Ltd. organised a series of Community Information Sessions to be held in the villages closest to the proposed development namely, Keenagh Community Centre, St Brigid's GAA Killashee, St. Mary's Parish Hall Lanesborough and The Hill Newtowncashel. These Community Information Sessions was held between 26th June to 6th July 2022 from 5 - 9pm each day, in the following venues:

- 29th June 2022: Keenagh Community Centre, Keenagh
- 30th June 2022: St Brigid's GAA, Killashee
- 5th July 2022 St Mary's Parish Hall, Lanesborough
- 6th July 2022 The Hill, Newtowncashel

2.3.1 Print Advertisement of Community Information Sessions

Details of the Community Information Sessions were advertised in two local papers, namely the Longford Leader and Roscommon People commencing the week of the 20th of June 2022.

2.3.2 Broadcast Advertisement of Public Consultations

Details of the Community Information Sessions were broadcast on local radio (Shannonside FM) three times daily on the 25th, 26th, 27th, 28th and 29th of June 2022 and the 2nd, 3rd, 4th, 5th and 6th of July 2022 to inform the local community of the dates, times and venues of the sessions.

2.3.3 Attendance and Feedback

Over the four days approximately 71 people attended the Sessions. Attendees were provided with an A2 map of the draft layout of the proposed development and an information booklet (Appendix A). The map contained the locations of the proposed turbines and distance bands to sensitive receptors out to 2km from a turbine to enable members of the community identify the proximity of the nearest turbine to their residential property (Appendix B).

Bord na Móna provided a number of information boards during the public consultation which members of the public could view and ask questions and provide feedback and concerns to members of staff in attendance. The information boards included details of the following;

- The site location showing the 3 bogs of Derryaroge, Derryadd and Lough Bannow;
- A draft 25 no. turbine layout with an overall blade tip height ranging from 170 - 190 metres;
- Six representative computer-generated photomontages showing visibility of the draft 25no. turbine layout from various locations within proximity of the proposed development;
- A wind farm proximity map showing the location of all sensitive receptors within 2km of the proposed development and the associated distances from the nearest turbines.

The main queries raised during this stage of the consultation, as recorded by Bord na Móna Powergen Ltd. staff at the sessions were:

| | |
|---|--|
| <ul style="list-style-type: none">• Proximity of Turbines | <ul style="list-style-type: none">• Community Benefit and Near Neighbour Funds |
| <ul style="list-style-type: none">• Wind Farm Amenities | <ul style="list-style-type: none">• Number and height of turbines |
| <ul style="list-style-type: none">• Noise | <ul style="list-style-type: none">• Visual Impact |
| <ul style="list-style-type: none">• Shadow Flicker | <ul style="list-style-type: none">• Ecological Sensitivity |

Following the above public consultation sessions, a copy of the brochure and map that was available at the sessions was circulated to circa 340 homes within 2km of the proposed development along with a feedback form and free post envelope. 7 feedback forms were returned to the project team.

2.5 Publication of Final Layout

Between the 26th of June and 14th of July 2023, the project's Community Liaison Officer delivered a final layout for the proposed development on an A2 double-sided map to circa 340 homes within 2km of a proposed turbine. The map depicted the proposed final turbine layout, substation location, internal site access road infrastructure and amenity access tracks. The map also included distance bands out to 2km from a proposed turbine to enable members of the community identify the proximity of the nearest turbine to their residential property (Appendix C).

2.6 Direct Correspondence and meetings

As outlined in the preceding sections, Bord na Móna Powergen Ltd. engaged with the local community on an ongoing basis throughout the pre-planning stage through Community Information Sessions, written communication with households and meetings with local representatives:

- A dedicated Community Liaison Officer (CLO) was appointed for the project as part of the original planning application (ABP Ref No. 303592-19) and carried out four rounds of visits to more than 300 houses within 2km of the site providing information as follows:
 - Information on the planned relaunch of the Derryadd Wind Farm Project (March 2022).
 - Invite to attend the upcoming public consultation event in June and July (May-June 2022).
 - Provision of information pack from public consultation events, including feedback form and freepost envelope for responses (July 2022)
 - Final wind farm layout and draft amenity plan issued (June 2023).

2.7 Dedicated Contact Details

Bord na Móna Powergen Ltd. has provided dedicated contact details for the proposed development, including a dedicated phone number, email address and postal address. To date, these channels have facilitated 50 enquiries about the proposed development.

2.8 Project Website

A Project Website was developed for the project as part of the original planning application (ABP Ref No. 303592-19). This website, <https://www.derryaddwindfarm.ie> went live on June 7th, 2017. This website was relaunched in February 2022 and has been updated throughout the project lifecycle with information about the proposed development, such as information distributed at Community Information Sessions, dedicated contact details for the project team, and downloadable material relating to the proposed location, project information booklets and layout maps.

2.9 Dedicated Community Liaison Officer

Bord na Móna Powergen appointed a dedicated Community Liaison Officer (CLO) for the project as part of the original planning application (ABP Ref No. 303592-19) for the proposed development to ensure a continued 'on the ground' engagement presence with the local community. The same dedicated Community Liaison Officer was also assigned to this project. As the company's main point of contact for the local community and vice versa, their role is to represent, communicate, consult and inform residents through regular updates via formal and informal meetings such as house calls, one to one meetings and clinics.

2.10 Engagement with Community Groups

The Code of Practice for Wind Energy Development in Ireland⁴ (2016) requests that all community groups local to the proposed development should be provided with the same information material as provided to local residents.

As Bord na Móna Powergen Ltd. did not have a database of community groups in the vicinity of the proposed project we liaised with Longford Public Participation Network (PPN) to determine the most suitable way to contact community groups with information on the project. Due to Data Protection, the PPN could not share contact information with us, but agreed to circulate copies of the information material to all relevant community groups, on our behalf. Longford PPN identified relevant community groups in the areas adjacent to the proposed development and information was distributed to these groups during the pre-planning phase.

Contact details were also provided if any of the groups wanted additional information on the project or requested a meeting with the project team to discuss the proposed development.

⁴ Department of Communications, Climate Action and the Environment, Code of Practice for Wind Energy Development in Ireland - Guidelines for Community Engagement, 2016.

Part 3 Community Input into Proposed Development

3.1 Community Input

As part of the original planning application (ABP Ref No. 303592-19), feedback was actively sought from the local community during the entire engagement period, enabling a broad spectrum of opinions and concerns to be addressed, ensuring that the proposed plans were accurately reflective of community input. This input was carried forward into the final proposed design for this planning application, in particular with regard to the amenity design for the proposed development.

During the consultation and engagement process for this planning application, there was strong interest in the amenity provision of the development and connectivity to other tourism attractions in the area and other amenity facilities in existence, under development and/or proposed including: Corlea Visitor Centre, Corlea Amenity Trails, Royal Canal Greenway, Derryrogue amenity and proposed Mid-Shannon Wilderness Park.

A total of approximately 18 km of wind farm internal site access roads within the proposed wind farm site will provide permanent amenity access tracks (including pedestrian and cyclist access) once the proposed development construction phase has concluded. An additional approximately 7.5 km of dedicated amenity access track is also proposed to provide connectivity to local roads and allow local access to the wind farm amenity areas.

These amenity access tracks will have a gravel/crushed stone finish surface and will be approximately 3 m in width on average. Figure 3-1 (within the Chapter 3 of the EIAR) Site Layout Plan outlines the final configuration of the wind farm site road with the additional dedicated amenity access tracks included in the layout plan.

The approximate 7.5 km of dedicated amenity access tracks will provide linkages between the proposed wind farm site roadways to the Royal Canal Greenway to the southeast of the bog (pedestrian/bicycle access only with no carparking area), and the Corlea Visitor Centre and Corlea Amenity Walk Project (to the south) and the Midlands Trail Networks project (Planning Reference No: 24/60132 (to the north)).

During the distribution of the final layout to the public between 26th of June and 14th of July 2023, 4 no. amenity car parks were initially proposed as part of the development. However, one car park, located to the north of the proposed development within Derryaroge Bog, has been removed from this application. This car park has been excluded as a new car park will be built, in parallel with the proposed wind farm site and serves as part of the Midland Trail Networks (Planning Reference No: 24/60132).

Bord na Móna

The Midland Trail Networks is a project aimed at developing a network of walking and cycling trails on Bord Na Móna lands, which includes the repurposing of a 5.2 km section of former rail bed, 3.1 km along existing bog headlands/former high fields, and 185 m along pre-existing machine passes. Amenity visitors can utilise the Midland Trail Networks car park to the north of the site to access the amenity track within the proposed wind farm site.

The amenity access points to the proposed wind farm site are illustrated in the Amenity Plan in Appendix 3.1 of the EIAR and in Figure 3-2 (within the Chapter 3 of the EIAR) – Construction/Operational and Amenity Access Location Map.

Part 4 Enduring Economic Benefit

4.1 Enduring Economic Benefit

Bord na Móna Powergen Ltd. recognises that the Preferred Draft Approach to Wind Energy Development in Ireland (June 2017) and the Code of Practice for Wind Energy Development in Ireland (December 2016) stipulates that wind farm developers should identify enduring economic benefit to the communities concerned from the proposed development and should also highlight short term economic benefits to the communities concerned.

4.1.1 Short Term Economic Benefits

During the construction phase, it is estimated that at peak construction between 100-120 jobs will be created. This in turn will have a knock-on effect on the local economy through the supply of services to the workforce. While at a regional level additional employment will be created in the region through the supply of services and materials (such as stone and concrete) to the wind farm.

Additionally, the payment of a development contribution to the relevant local authorities in respect of public infrastructure and facilities will potentially provide benefits to the local community through schemes such as the refurbishment, upgrading or replacement of roads, car parks and car parking places; sewers and wastewater facilities, drains or water mains; provision of open spaces/parks, community facilities, amenities and landscaping works etc.

4.1.2 Long Term Economic Benefits

The proposed project will provide many long-term economic benefits to the communities surrounding the proposed development including:

Employment

Once operational, the wind farm will support 6-8 long term, high quality technical jobs in operation and maintenance.

Rates

Annual rates paid by the wind farm to Longford County Council will potentially support the provision of local services.

Community Benefit Fund

The Community Benefit Fund will be developed during the first year of operation and will include the following:

- Financial assistance to local communities and not-for-profit organisations within 10 km of the proposed development will be considered first and given priority - subject to the project meeting the overall terms and conditions of the Fund. A key criterion is that the projects and initiatives will benefit the communities surrounding the wind farm. A Fund Committee will be established and will consist of a number of volunteer community representatives and the

project Developer. Generally speaking, the Fund Committee should aim to represent the widest cross-section of the community possible.

- An Educational Scholarship Scheme to support a number of local students in accessing further education. It will provide a monetary grant to a number of successful applicants, for each year of study, up to a maximum of 4 years, for a number of students (including apprenticeships) living in the vicinity the proposed development. The Scholarship may be used towards course fees, accommodation, tools, transport costs etc.
- A Near Neighbour Scheme which will offer principal primary residents within a prescribed distance of a wind turbine an annual contribution towards their electricity usage. In addition to the electricity contribution payment, this Scheme will also offer participants a contribution towards the completion of energy measures on the property and/or education support. This is in line with existing near neighbour schemes that are active at other Bord na Móna operational wind farms.

The value of the Community Benefit Fund will be directly proportional to the energy produced at the site (per loss adjusted metered generation), which based on current Funds, will be in the region of €15 million over the lifetime of the project.

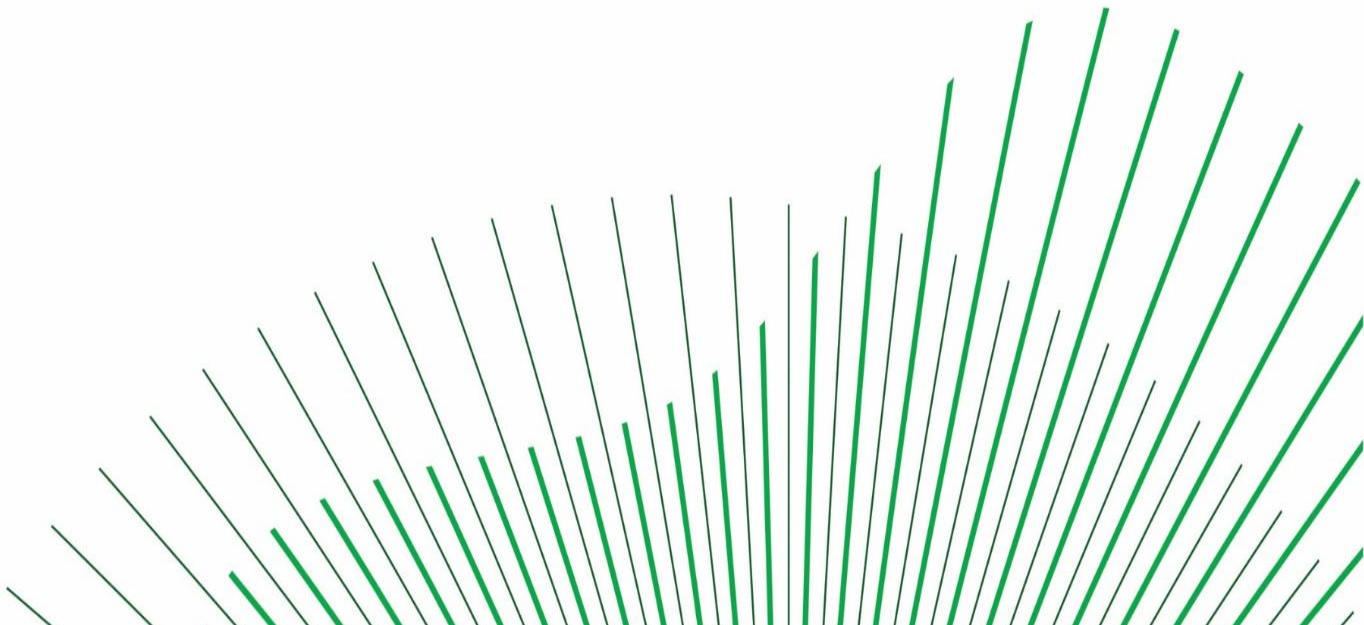
Part 5 Conclusion

Bord na Móna Powergen Ltd. has pro-actively engaged and consulted with the local regarding the proposed Derryadd Wind Farm. The final project proposal has carried forward feedback and input submitted by the local community from both the consultation conducted as part of the original planning application and additional consultation and engagement carried out for this proposal.

The development of the proposed Derryadd Wind Farm will provide an enduring economic benefit to the communities surrounding the proposed development. The project will create job opportunities during both the construction and operation phase. It will pay annual rates to the local authority. Additionally, the provision of the amenity trails and access points will enhance recreational opportunities. The wind farm's connectivity with local attractions, such as the Corlea Trackway Visitor Centre and the Royal Canal, will further stimulate tourism and support local businesses.

The Community Benefit Fund will provide enduring socio-economic benefit to the local communities. The Fund will provide financial support for local initiatives, such as community infrastructure improvements, community services, and tourism and recreational programmes. The Fund will seek to support specific community needs and priorities - ensuring that the positive impacts of the wind farm are felt broadly and equitably across the wider community.

Appendix A – Draft Turbine Layout Map and Information Booklet



Proposed Derryadd Wind Farm

Summer 2022



A woman with long dark hair, wearing a dark jacket, stands in a field of tall, golden-brown grass. She is holding a silver water bottle in her right hand. In the background, several wind turbines are visible against a clear blue sky. The sun is low on the horizon, creating a warm, golden glow and a lens flare effect.

Frequently asked questions

1. Why is Bord na Móna submitting a new planning application for the proposed Derryadd Wind Farm?

Bord na Móna maintains the view that the most appropriate climate change solution and optimum land use for the site continues to be a project combining wind energy, amenity and rehabilitation. The development of a wind farm on these bogs will compliment other land uses within the site and across the wider Mountdilllon Bog Group, including the company's peatland rehabilitation programme and ongoing amenity development in the area, which includes the Mid Shannon Wilderness Park.

2. How many turbines are proposed for the development?

Resulting from the development of the draft wind turbine layout, there are 25 turbines proposed for the Derryadd Wind Farm project. For further information, please see page 12.

3. What height are the proposed turbines and how close are they to people's homes?

The proposed turbines will have an overall blade tip height ranging from 170 - 190 metres. For further information, please see page 12.

4. What setback distance has been applied from houses?

The turbine layout has been designed with a minimum setback distance of 4 times the tip height - 760 metres to the nearest house. For further information, please see page 12.

5. When will a planning application be lodged?

It is envisaged that a planning application will be lodged in early 2023 for the proposed development. It is intended to submit the planning permission application directly to An Bord Pleanála, under the provisions of the Planning and Development (Strategic Infrastructure) Act 2006. An initial approach is therefore being made to An Bord Pleanála seeking a determination in relation to the Strategic Infrastructure Development (SID) status, or otherwise, of the proposed wind farm development. For further information, please see page 12.

6. What land area will the proposed wind farm occupy?

Only approximately 3% of this area will be used for turbine bases, crane hard-standings and access tracks, so much of the land area will not be required by the development. This means that it can be utilised for other purposes, such as biodiversity and amenity.

7. Where will the power from the proposed wind farm go?

The electricity generated by the turbines will be transmitted directly onto Ireland's National Grid which is managed by EirGrid for distribution around the country. The proposed development will make a significant contribution to Ireland's Climate Action Plan 2021, which has set a target of 8GW of onshore wind capacity by 2030.

8. What stage is the project at now?

The project team is conducting a number of onsite surveys, including ecology surveys and ornithology surveys. Further ecological surveys, aquatic surveys, heritage surveys and site investigation works will be undertaken over the course of the next few months. In addition to these ongoing site works, we are also looking to consult with the community on the draft wind turbine layout.

9. How can I provide feedback on the proposed development to Bord na Móna?

We encourage feedback through a number of channels including:

- Through the Community Liaison Officer, James (see page 19 for further details).
- Submission of a Feedback Questionnaire (please see page 14 for further details).
- Via the project's dedicated email address: derryaddwindfarm@bnm.ie



Introduction

Bord na Móna is an Irish, semi-state climate solutions company helping lead Ireland towards a climate neutral future.

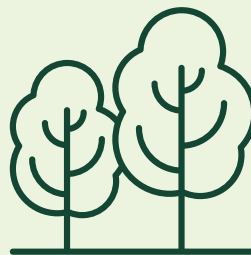
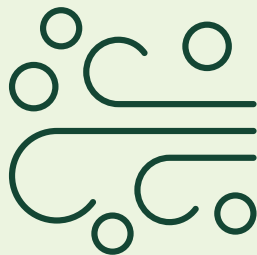
Bord na Móna has been serving communities for over 90 years, always rising to meet the needs of the day. It was founded in 1934 as The Turf Development Board to enhance national energy security through peat harvesting and became Bord na Móna in 1946.

Today, we have radically changed our approach to face an even greater challenge: climate change. We have ended peat harvesting and now our focus is developing climate solutions in renewable energy, sustainable waste management, carbon storage and biodiversity conservation.

Ireland has committed to ambitious climate goals and Bord na Móna's climate solutions are helping to achieve them. Our vision is to help Ireland reach net zero greenhouse gas emissions by 2050. This means helping to remove the same amount of greenhouse gases from the atmosphere that are released.

To power a net zero future, we are expanding our renewable energy infrastructure. We have been constructing and maintaining large-scale infrastructure for decades. Today, we are using that experience to build renewable energy developments across the country. These developments are transforming the way we generate and consume energy.

Ireland has committed to generating 80% of electricity from renewable sources by 2030. We are working across wind, solar, biomass and biogas to help achieve this target and to provide energy security for future generations.



Irish Government Policy on Renewable Energy

Successive Governments have been developing policy to chart a course towards ambitious decarbonisation targets for Electricity, Transport, Built Environment, Industry and Agriculture. In March 2019, the Joint Oireachtas Committee on Climate Action published its cross-party report entitled, Climate Change: A Cross-Party Consensus for Action, which set out 42 priority recommendations in the area of climate action, including a target for 70 percent renewable electricity.

The Programme for Government 2020 details how energy will play a central role in the creation of a strong and sustainable economy over the next decade. The reliable supply of safe, secure, and clean energy is essential to deliver a phase-out of fossil fuels. To reduce emissions and decarbonise both Heat and Transport, electrification will play an important role in ensuring Ireland meets emission targets. This will create rapid growth in demand for electricity which must be planned and delivered in a cost-effective way.

The Irish Government supports the use of Ireland's wind resources to meet our renewable energy targets. Outlined below is some of the most recent relevant Irish Government Policy:

- Energy White Paper entitled Ireland's Transition to a Low Carbon Energy Future 2015–2030.
- Climate Action and Low Carbon Development Act 2015 as a landmark national milestone in the evolution of climate change policy in Ireland. The purpose of the Act is pursuing the transition to a low carbon, climate resilient and environmentally sustainable economy.
- The Climate Action Plan 2021: This plan identifies how Ireland will achieve its 2030 targets for carbon emissions and puts the country on a trajectory to achieve net zero carbon emissions by 2050. The plan outlines that Ireland will move to 80% renewable electricity by 2030.
- Project 2040: National Development Plan 2018 – 2027 which outlines an additional 4,500MW of renewable energy as an investment priority as part of strategic pillar No. 8 - Transition to a Low Carbon and Climate Resilient Society.
- Renewable Electricity Support Scheme to contribute to Ireland's 2020 renewable electricity targets and to deliver Ireland's renewable energy ambitions out to 2030.
- Department of Housing, Planning and Local Government is currently preparing an update to the 2006 Wind Energy Development Guidelines and in December 2019 published revised draft Wind Energy Development Guidelines for consultation.
- Department of Environment, Climate and Communications is preparing a Renewable Electricity Policy and Development Framework to guide the development of renewable electricity projects in line with the objectives of Irish energy policy.
- Climate Action and Low Carbon Development (Amendment) Act 2021. Legislation designed to put Ireland on a path to net zero emissions, no later than 2050 and a 51% reduction in emissions by the end of the decade.



Need for Wind Energy

Wind farms produce renewable electricity and assist in the offset of carbon emissions including those arising from other sectors, such as agriculture. The proposed project will contribute to both Ireland's and the European Union's renewable energy targets. It will also contribute to increasing the security of Ireland's energy supply and will facilitate a higher level of energy generation and self-sufficiency.

The National Development Plan 2021 – 2030 includes commitments to increase the share of renewable electricity up to 80% by 2030. It is acknowledged that wind energy will provide the main component of Ireland's renewable electricity at that time. The proposed development is likely to be operational before 2030 and would therefore contribute to this 2030 target.

The Climate Action Plan 2021 (CAP) was published on the 4th November 2021 by the Department of the Environment, Climate

and Communications. The CAP sets out an ambitious course of action over the coming years to address the impacts which climate may have on Ireland's environment, society, economic and natural resources. This Plan clearly recognises that Ireland must significantly step up its commitments to tackle climate disruption. The CAP identifies a need for 8GW of onshore wind generation. The CAP presents clear and unequivocal support for the provision of additional renewable energy generation and presents yet further policy support for increased wind energy.

Draft Revised Wind Energy Development Guidelines in Ireland



In 2019, Revised Wind Energy Development Draft Guidelines were issued for public consultation. Key aspects of these Draft Guidelines included:

1. Noise Limits

Noise restriction limits consistent with World Health Organisation standards are proposed. The noise limits will apply to outdoor locations at any residential or noise sensitive properties.

2. Visual Amenity Setback

A visual amenity setback distance, of 4 times the tip height, between a wind turbine and the nearest residential property is proposed, subject to a mandatory minimum setback of 500 metres.

3. Shadow Flicker

It is proposed that technology and appropriate modelling at design stage is adopted to eradicate the occurrence of shadow flicker and must be confirmed in all planning applications for wind energy development.

4. Consultation Obligations

Planning applications must contain a 'Community Report' prepared by the applicant

which will specify how the final proposal reflects community consultation and the steps taken to ensure that the proposed development will be of enduring economic benefit to the communities concerned and demonstrate adherence to community engagement codes of practice.

5. Grid Connection

From a visual amenity aspect, undergrounding of cable connections from wind farms to the transmission and distribution system is the most appropriate solution, except where specific ground conditions or technical considerations make this impractical.

6. Community Dividend

Wind farm developers will also be required to take steps to ensure that the proposed development will be of enduring economic benefit to the communities concerned.

The Proposed Location

The location for the proposed wind farm is shown in Figure 1 below. The proposed Derryadd Wind Farm will be developed on cutaway peatlands on Derryadd, Derryaroge and Lough Bannow bogs in south Co. Longford. The three bog areas on which the proposed wind farm will be located are generally adjacent to the communities of Derraghan, Keenagh, Killashee and Lanesborough.

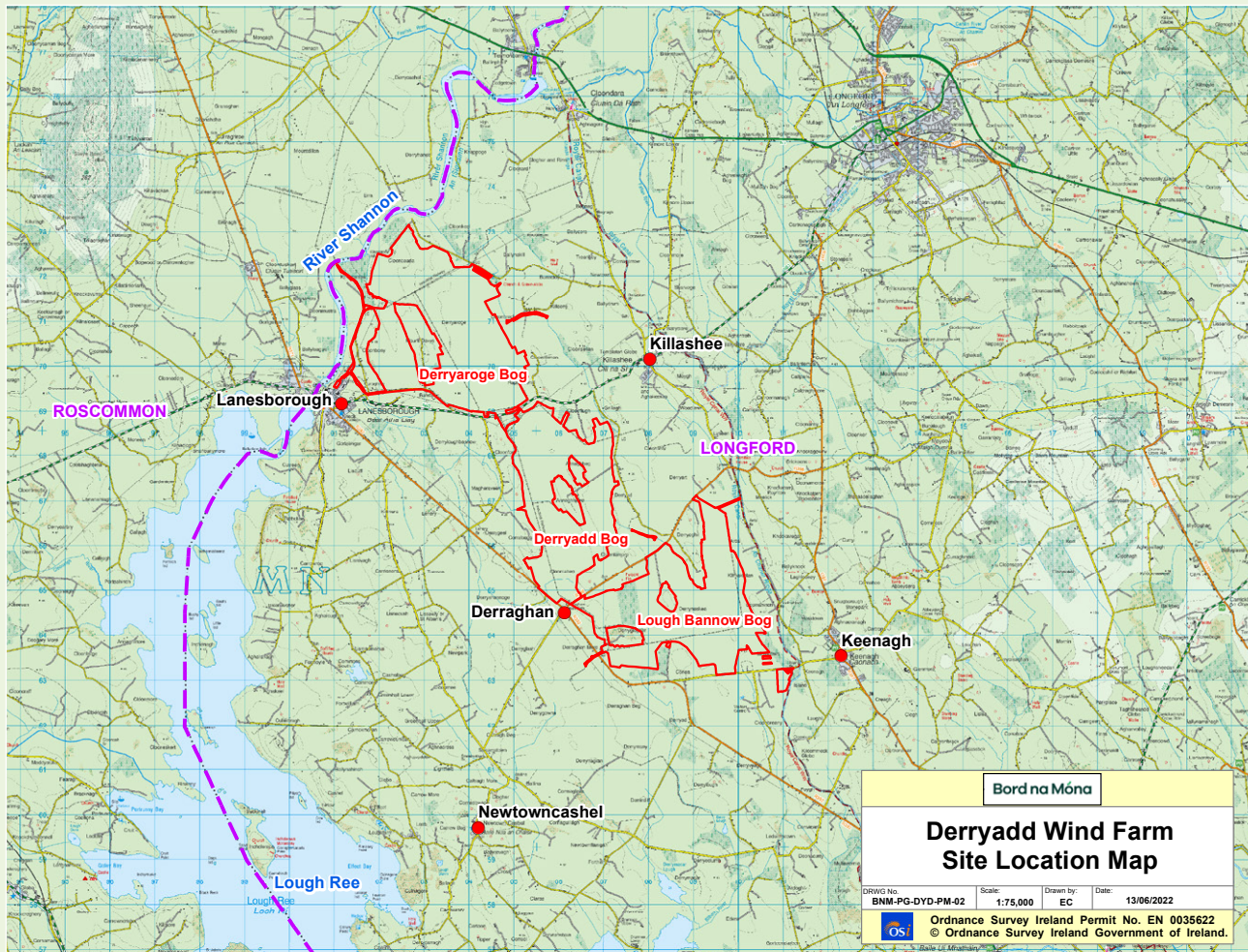


Figure 1: Site Location Map

A draft layout, consisting of 25 turbines has been developed for the proposed wind farm (to view draft layout map, please refer to pages 10 and 11).

The development of a wind farm on these bogs would continue the long tradition of energy production in a new increasingly sustainable form and underpin Bord na Móna's move away from its traditional 'brown' generation to a more sustainable 'green' future. The electricity generated by the turbines would be transmitted directly onto Ireland's National Grid which is managed by EirGrid for distribution around the country.

Bord na Móna's peatlands offer a number of advantages for the development of onshore wind farms, which include:

- Significant scale, and are present in large blocks.
- Industrial, brown-field sites, suitable for redevelopment.
- Open, unenclosed landscapes with good wind characteristics.
- Linked by rail or road passageways, suitable for cable connection.
- Generally flat and well drained, with minimal dangers of land slippage.
- Proven delivery of this type of development, as demonstrated by Bruckana, Mountlucas and Oweninny Wind Farms.



Site Selection

In selecting a site for a wind farm development there are a number of criteria that must be considered. Based on these criteria some sites are more suitable for wind farms than others. The main criteria that we consider include:

- Aviation
- Grid Access
- Flooding Risk
- Proximity to Dwellings
- Cumulative Visual Impact
- Supporting Infrastructure
- County Development Plan
- Telecommunications Links
- Environmental and Ecological Sensitivities

Archaeology

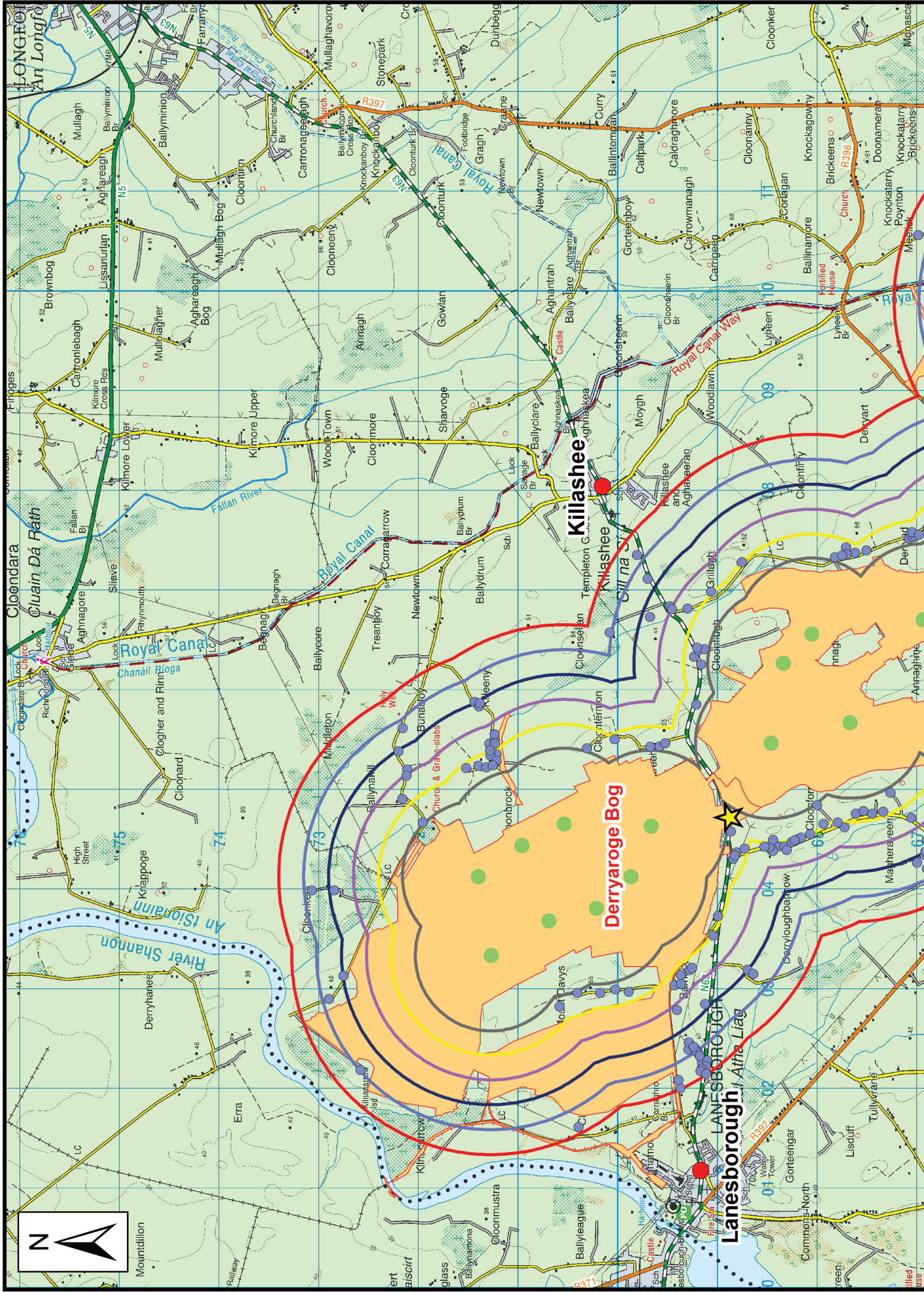
Peatlands have been a very important source of archaeological material in Ireland. Artefacts found both under and within peatland deposits have provided detailed information about communities who lived in the early periods of our history as well as about the food, clothes and tools which were used from the Stone Age to recent times. This Bog Group and the surrounding areas have a rich archaeological history which will be taken into account during all stages of

the project. It's hoped that this archaeological history could be incorporated into amenity proposals for the project.

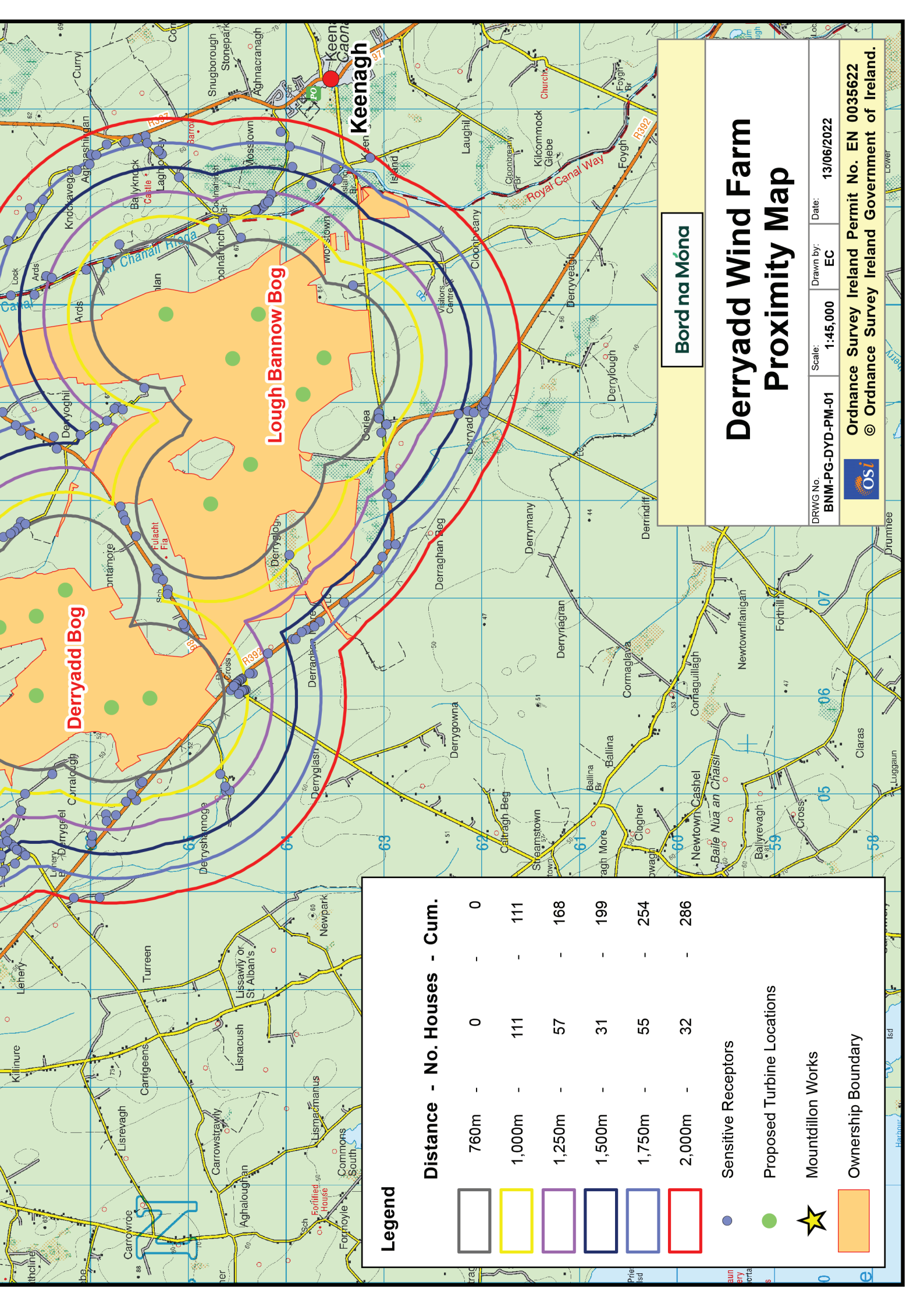
The heritage of these bogs and the surrounding areas will be addressed in the Environmental Impact Assessment Report (EIAR) that will accompany the planning application for the proposed development, in particular the following chapters: Archaeological, Architectural and Cultural Heritage; and Landscape and Visual.

Biodiversity

Extensive surveys are ongoing to determine the habitats and species that occur within the site and the wider hinterland area. Features that are sensitive from a biodiversity perspective are constrained out at design stage. The surveys include breeding and wintering bird surveys, habitat surveys, bat, mammal and aquatic surveys, amongst others. A full description of the biodiversity of these bogs and the surrounding area will be addressed in the EIAR that will accompany the planning application for the proposed development, in particular the following chapters: Biodiversity; and Ornithology (birds).



Mountdillon



Bord na Móna

Derryadd Wind Farm Proximity Map

| | | | |
|---|----------|-----------|------------|
| DRWG No. | Scale: | Drawn by: | Date: |
| BNM-PG-DYD-PM-01 | 1:45,000 | EC | 13/06/2022 |
| Ordnance Survey Ireland Permit No. EN 0035622 © Ordnance Survey Ireland Government of Ireland. | | | |

Legend

Distance - No. Houses - Cum.

| | | | |
|--------|-----|---|-----|
| 760m | 0 | - | 0 |
| 1,000m | 111 | - | 111 |
| 1,250m | 57 | - | 168 |
| 1,500m | 31 | - | 199 |
| 1,750m | 55 | - | 254 |
| 2,000m | 32 | - | 286 |

- Sensitive Receptors
- Proposed Turbine Locations
- Mountdillon Works
- Ownership Boundary

The Proposed Wind Farm

Number of Turbines: 25

The draft layout comprises 25 wind turbines. Apart from the turbines themselves, the other principal components of the wind farm are the foundations to support the turbine towers, access, crane hard standings, underground cables between the turbines, an electricity substation and an electrical connection to the appropriate node on the National Grid. Please see pages 10 and 11 for Draft Layout Map.

Height of Turbines: 170–190m

The proposed turbines will have an overall blade tip height ranging from 170–190 metres. Within this size envelope, various configurations of hub height and rotor diameter may be used. The exact make and model of the turbine will be dictated by a competitive tender process, post planning and it will not exceed the maximum tip height of 190 metres.

Setback Distance: 760m

The turbine layout has been designed with a minimum setback distance of 760m to the nearest house from a turbine. This complies with the Draft Wind Energy Development Guidelines (2019), which proposes a setback distance of 4 times the tip height. Table 1 depicts the number of houses within a range of setback distance bands from the proposed turbine layout (refer to the Draft Layout Map on pages 10 and 11).

Wind Farm Output: 150MW

Early studies of the site have indicated that it may be capable of accommodating approximately 150 Megawatts (MW) of installed generating capacity. When operational, the proposed Derryadd Wind Farm will generate a volume of electricity equivalent to the average annual electrical demand of circa 98,000 Irish homes*.

Planning Timeline

It is intended to submit a planning application in early 2023 for the proposed development. It is envisaged that the planning permission application will be submitted directly to An Bord Pleanála, under the provisions of the Planning and Development (Strategic Infrastructure) Act 2006.

Final Layout Publication:

Winter 2022/Spring 2023

Submission of Planning Application:

Spring 2023

*Based on Annual Capacity Factor across Ireland in 2020 of 30.3% and average household electricity consumption of 4,200kWh

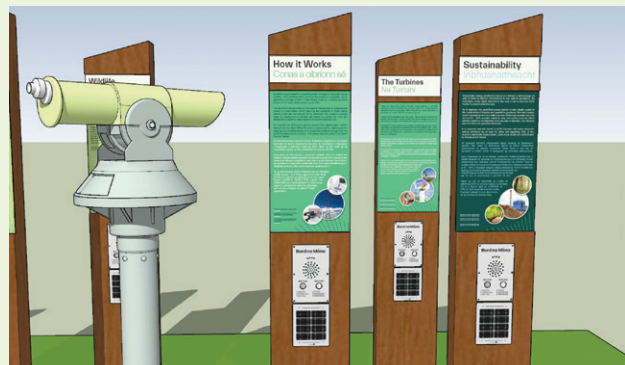
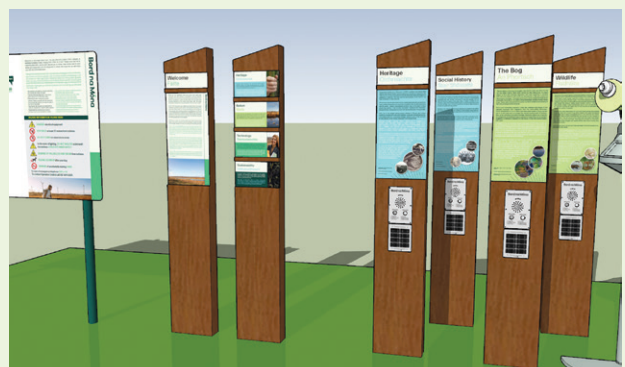
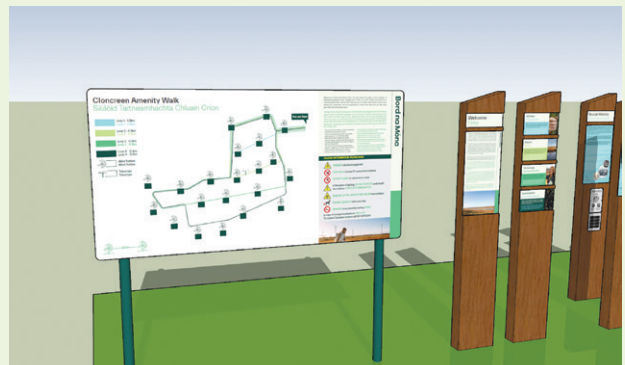
| Distance | No. of Houses | Cumulative |
|----------|---------------|------------|
| 760m | 0 | 0 |
| 1000m | 111 | 111 |
| 1250m | 57 | 168 |
| 1500m | 31 | 199 |
| 1750m | 55 | 254 |
| 2000m | 32 | 286 |

Mid Shannon Wilderness Park and Bord na Móna lands

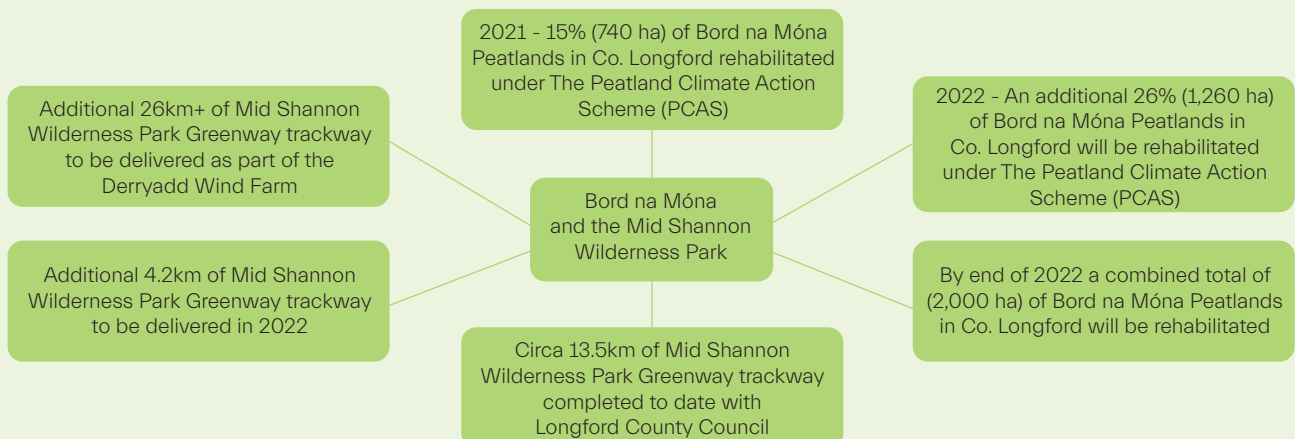
The development of the proposed Derryadd Wind Farm will support the continued delivery of the Mid Shannon Wilderness Park Concept by Bord na Móna in the form of amenity trails throughout the site. The proposed Mid Shannon Wilderness Park consists of an area of circa 29,000ha, consisting of a mixture of open water, rivers, agriculture land, forestry peatland, towns and villages. Of this area a total of 17% consists of cutaway peatlands. The infrastructure for the proposed Derryadd Wind Farm will occupy a footprint of circa 0.2% of the entire proposed Mid Shannon Wilderness Park area and as such will be compatible with its development.

Bord na Móna has successfully demonstrated this collocated land use at its Mountlucas Wind Farm in Co. Offaly, which attracted over 50,000 visits in 2021.

The Mid Shannon Wilderness Park Report, Longford County Council 2013 states: *“The development of the Mid Shannon Wilderness Park will combine existing natural amenity areas. These areas include Lough Ree, the Rivers Shannon, Inny and Camlin, the Royal Canal, Newcastle Wood and other forests and rehabilitated Bord na Móna bogs. All of these amenity areas are in very close proximity to each other and can be developed and combined to create the Wilderness Park. The Park would be developed in partnership between the various owners particularly Bord na Móna, local communities and Longford County Council. This will not conflict with any future intention of Bord na Móna and its potential future use of the bogs. The amenity use of the rehabilitated bogs can be compatible with any future use for the bogs such as renewable energy projects.”*



Examples of Interpretative Signage Designed in Consultation with the Local Community for the Amenity Facilities at Bord na Móna's Clonreen Wind Farm.





Community Engagement

Bord na Móna understands the importance of community engagement at every stage of the proposed Derryadd Wind Farm development process. The proposed development will benefit from participation by all interested parties during each stage of the development.

We are constantly updating and adapting our communications channels to ensure the public are informed about the proposed development. This means continuing to use our traditional methods of communication in addition to a number of interactive online tools to ensure we engage on an ongoing basis through the following:



Community Liaison Officer

Bord na Móna has appointed a dedicated Community Liaison Officer (CLO) – James Rowan – for the proposed Derryadd Wind Farm project. The role of CLO is a very important one as it is an effective and efficient

process for maintaining a continuous channel of communication, consultation and engagement between Bord na Móna, stakeholders and the

community at large. James can be contacted during office hours on 087 7087022 or via derryaddwindfarm@bnm.ie

A Feedback Questionnaire

Should you wish to submit any comments/ suggestions on the proposed development, a feedback questionnaire can also be completed on the project website. For your convenience, we have included a paper-based copy of the questionnaire and a freepost envelope within the project information pack James will be delivering to homes within the vicinity of the proposed development over the coming weeks.

A Virtual Consultation Room

As part of our Community Engagement activities, we have launched the Derryadd Wind Farm “Virtual Consultation Room” as part of our Communication Tools for the project. The Virtual Consultation Room contains a number of interactive features including a 360° Photomontage viewer and a virtual ‘fly by’ video of the site location. Please feel free to visit the Virtual Consultation Room via the project’s dedicated website www.derryaddwindfarm.ie

Benefits of the Development

The proposed development will give rise to a range of benefits at different levels. **At a Local Level,** benefits arising from the construction and operation of the proposed wind farm will include:

- Employment.
- Continued delivery of the Mid Shannon Wilderness Park by Bord na Móna.
- Upgrading of the road infrastructure in the vicinity of the wind farm (as required).
- Amenity and Recreational Facilities.
- The provision of a Community Benefit Fund.
- Payment of taxes from the project, and dividends from Bord na Móna to the State.
- Substantial rates paid to the relevant Local Authority.

Employment

A large wind farm development of this scale would typically support 100–120 jobs at peak construction. There will also be indirect employment created through the sub-supply of a wide range of products and services including: gravel and graded stone for roads and hard stands, concrete and steel for turbine bases, building materials for sub stations, haulage of components from the ports to the site, accommodation, legal and financial services. Once complete the project will also support a number of long term, high quality technical jobs in operations and maintenance.

Amenity and Recreational Facilities

A high-level amenity plan will accompany the planning application and we would welcome any feedback or proposals the community may have with respect to amenity. A good example of one of our existing wind farm amenity facilities is Mountlucas Wind Farm in North Offaly. The site consists of a 10km walkway / cycleway around the wind farm in addition to interpretative signage, outdoor exercise equipment and a learning hub which is utilised by various school and college groups for educational purposes and day trips. In 2021, the wind farm welcomed over 50,000 visits to its amenity facilities.

Community Benefit Fund

Similar to our existing wind farms, it is envisaged that an annual Community Benefit Fund will be set up for the proposed Derryadd Wind Farm once the project is operational. As the project is at an early stage of its development, the exact nature and structure of a proposed Community Benefit Fund is not known at this time, albeit we would envisage it being similar in type to our existing Community Benefit Funds which include:

- A Community Gain Scheme – providing funding to local community and not-for-profit organisations
- A Near Neighbour Fund – providing an annual electricity contribution and once off support to carry out energy efficiency measures and/or education support to residents within a prescribed distance of a turbine.

At a Regional Level, the new development will help to supply the rising demand for electricity, resulting from renewed economic growth in the Midlands region. During construction, additional employment will be created in the region through the supply of services and materials to the wind farm.

At a National Level, the new development will play a significant role in contributing to the country's national renewable electricity production and carbon emissions reduction targets by 2030, while also supporting a growing economy and population. During operation, the wind farm will eliminate the need to generate the equivalent amount of electricity from fossil fuels, and it will therefore help to reduce total national greenhouse gas emissions. In doing so, it will reduce our dependence on external energy sources, help improve our energy security of supply and make a major contribution to Ireland's Climate Action Plan, which has set a target of 8GW of onshore wind capacity by 2030.

Sample of projects supported under Bord na Móna's Community Gain Schemes



Crosspatrick Sports, Fitness and Well Being Group - Exercise Bicycles for Community Spinning Classes with instructor Susan Fogarty.



Crosspatrick Community Hall - This organisation is currently undertaking a large extension to the Community Hall.



Crosspatrick Church recently refurbished the Church railings.



Moyne Tidy Village Association who have recieved funding for various projects in the local community.

How Wind Turbines Operate

Almost all wind turbines producing electricity consist of vertical blades which rotate around a horizontal axis. Most modern wind turbines have three blades which face into the wind when extracting the energy needed to generate electricity. The blades are attached to a hub which in turn is connected to a generator by means of a gearbox or direct drive mechanism, which is located inside a protective container called a nacelle. This is where the electricity is made. As the blades are turning, they spin the generator to create electricity. A generator is a machine that produces electrical energy from mechanical energy, whereas an electric motor does the reverse.

The nacelle is the large box at the top of the tower where all the main electrical components are located. Figure 2 shows an image which depicts the main elements of a modern wind turbine. Many of the key working parts of a wind turbine are located in the nacelle at the top of the tower and their enclosure within the nacelle reduces noise from the turbine. A schematic of a wind turbine nacelle is shown in Figure 3, with the key components labelled for easy reference.

Tubular towers, which support the nacelle and rotor, are usually made of steel and taper from their base to

the top. The entire nacelle and rotor are designed to swing around, or 'yaw', in order to face the prevailing wind and extract the maximum amount of energy.

A modern wind turbine is designed to produce high quality electricity whenever enough wind is available. Wind turbines can operate continuously, unattended, and with low maintenance, with a design life of over 20 years. They are highly reliable, with operating availabilities (the proportion of the time in which they could generate if wind conditions were suitable) of up to 98%. Few other electricity generating technologies offer a higher availability.

Landscape and Visual Impact Assessment

A typical tool utilised in the assessment of the visual impact of a wind farm is a Photomontage. Photomontages are visualisations that superimpose an image of a proposed development upon a photograph or series of photographs and are used to illustrate the potential impact of a development on the existing landscape. A number of photomontages will be created as part of the Landscape and Visual Impact Assessment (LVIA) for the proposed wind farm. Samples of the photomontages which will form part of the LVIA for this proposed development can be viewed in the accompanying booklet "LVIA Photomontage Booklet".

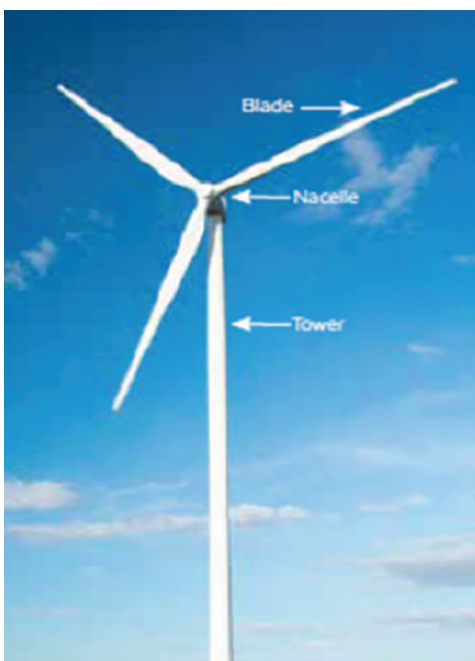


Figure 2: Image of a typical Wind Turbine.

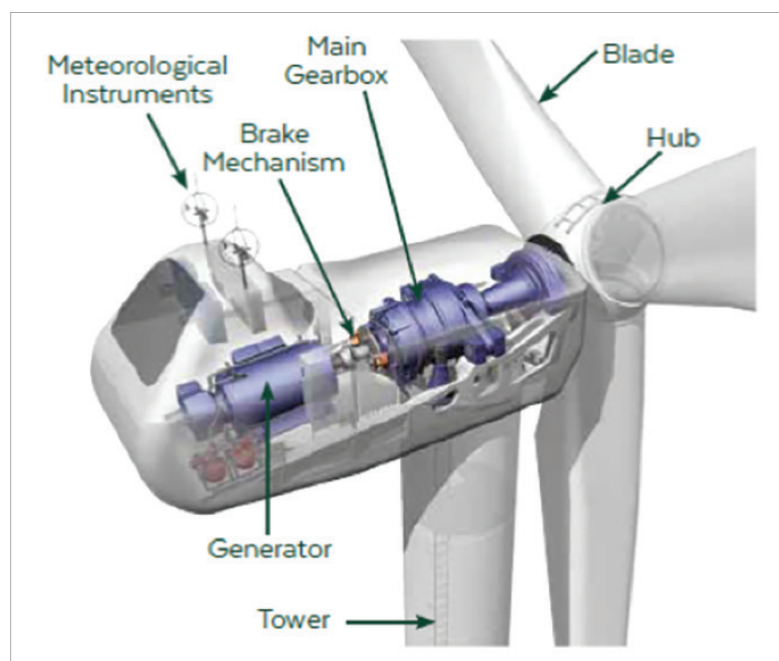


Figure 3: Schematic of a typical Wind Turbine nacelle.

Strategic Infrastructure Planning Process Explained

For most large projects, a key issue is whether a development is Strategic Infrastructure Development (SID) or not?

Energy infrastructure which is considered SID* includes:

“An installation for the harnessing of wind power for energy production (a wind farm) with more than 25 turbines or having a total output greater than 50 megawatts”.

*(as outlined in the Seventh Schedule, Section 1 of the Planning and Development (Strategic Infrastructure) Act 2006).

| SID Projects | Non-SID Projects |
|---|---|
| Planning Application to An Bord Pleanála | Planning Application to Local County Council |
| Environmental Impact Assessment Mandatory | Environmental Impact Assessment Mandatory in some cases |

At this stage of the project, Bord na Móna estimate that the output of the proposed Derryadd Wind Farm will be approximately 150MW. Consequently, Bord na Móna will need to go through a pre-planning consultation process with An Bord Pleanála to determine with certainty who the consenting authority will be. Irrespective of the Consenting Authority it is our view that an Environmental Impact Assessment Report will be required as supporting documentation to the planning application.

What is included in an Environmental Impact Assessment Report (EIAR)?

Due to the nature and scale of the proposed development an Environmental Impact Assessment (EIA) will need to be carried out. As part of this process, an environmental baseline for the proposed development site will be established through fieldwork and other baseline surveys.

All of this information will be described and documented in an Environmental Impact Assessment Report (EIAR) which will accompany the planning application documentation submitted to the appropriate Consenting Authority for consideration. The EIAR will comprise the following chapters as a minimum:

1. Introduction (Incl, Need for the Project)
2. Reasonable Alternatives Considered
3. Planning and Policy Context
4. Project Description
5. Draft Construction and Environmental Management Plan
6. Biodiversity
7. Archaeological, Architectural and Cultural Heritage
8. Hydrology and Hydrogeology
9. Soils, Geology, Geotechnics and Ground Stability
10. Air Quality and Climate
11. Noise and Vibration
12. Landscape and Visual
13. Shadow Flicker
14. Aviation, Telecommunications and Electromagnetic Interference
15. Traffic and Transportation
16. Population and Human Health

How you can get in touch



The Derryadd Wind Farm will benefit from participation by all interested parties during each stage of the development. There are a few ways you can get in touch with us:

Call us

If you wish to make a comment or require further information about the proposed wind farm please call the project's **Community Liaison Officer, James (087) 7087022***

Email us

Email us any comments or queries via:
derryaddwindfarm@bnm.ie

Write to us

Derryadd Wind Farm Communications Team,
Bord na Móna,
Main Street,
Newbridge,
Co. Kildare

Join our mailing list

Keep informed of all project updates by signing up to our project mailing list. Please visit the project website to complete the sign-up form: **www.derryaddwindfarm.ie**

*9am to 5pm Monday to Friday excluding bank holidays.

Bord na Móna

Bord na Móna



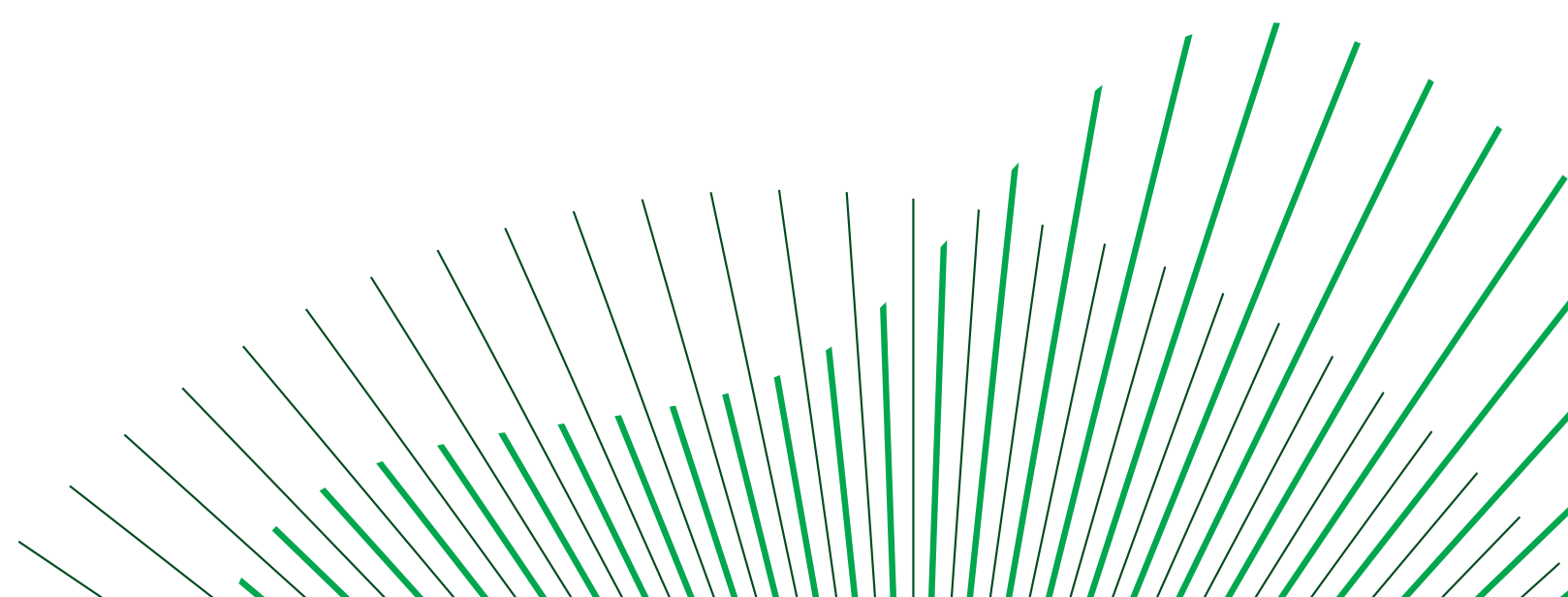
Proposed Derryadd Wind Farm

Feedback Questionnaire Summer 2022

You can also submit your feedback to the project team via the online feedback form available on the dedicated project website www.derryaddwindfarm.ie

Please return your feedback on this Consultation Phase to the Project Team by **Friday 26th August 2022** via the FREEPOST envelope included or email to: derryaddwindfarm@bnm.ie

The views submitted by you on our proposals, along with results from further studies, will help us to identify the best plan to take forward into the planning process.



Bord na Móna

Q1. Do you have any feedback regarding the draft layout for the proposed Derryadd Wind Farm?

Q2. Do you have any amenity suggestions that you would like us to consider for inclusion in the proposed Derryadd Wind Farm development?

Q3. What types of benefits do you believe the local community should receive if the wind farm is developed?

Q4. Do you feel this consultation process has enhanced your understanding of the proposed Derryadd Wind Farm? If no, please state the reasons why?

Bord na Móna

Q5. Have you any other comments or additional information you would like to provide in relation to the proposed development?

PLEASE COMPLETE IN BLOCK CAPITALS.

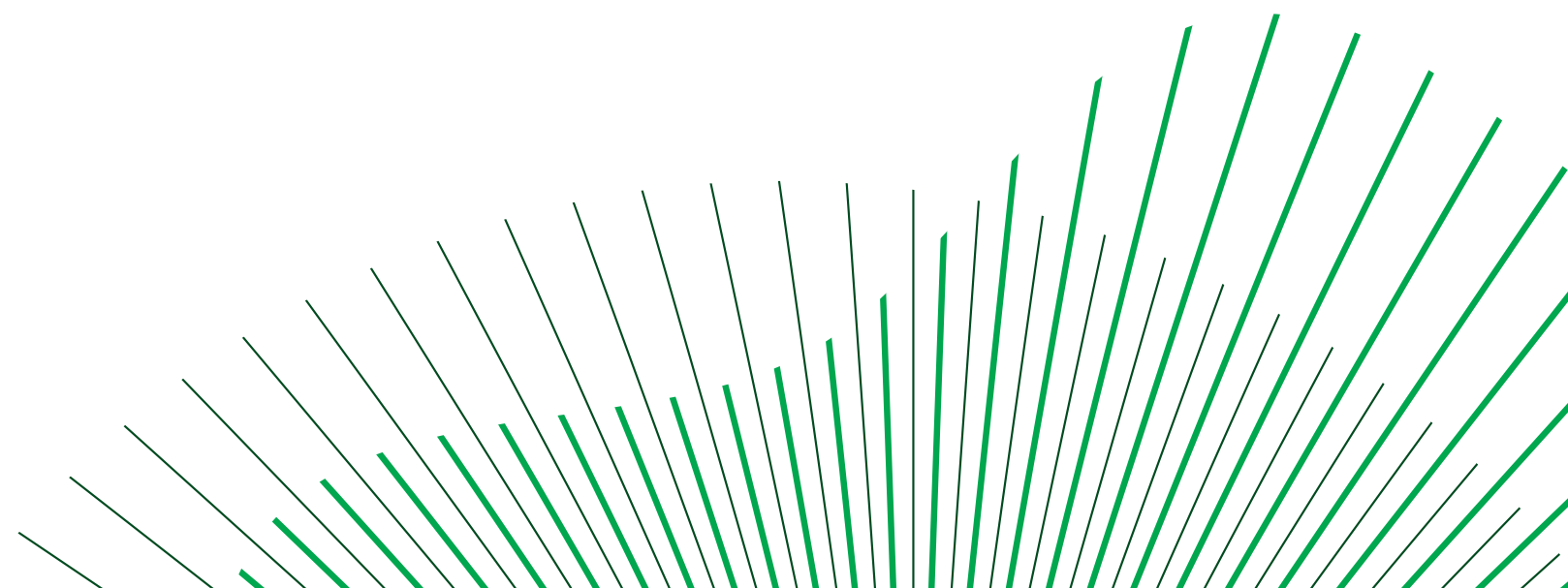
Name:

Address:

Eircode:

Please return your feedback on this Consultation Phase to the Project Team by **Friday 26th August 2022** via the FREEPOST envelope included or email to: derryaddwindfarm@bnm.ie

Bord na Móna



Derryadd Wind Farm

Communications Opt-In Form

(Consent form to join postal communications list)

You can also complete this form online by visiting www.derryaddwindfarm.ie

To keep you informed of all relevant project updates Bord na Móna Powergen Ltd. is providing the option to subscribe to our postal service to provide project updates. If you wish to participate in this service for the Derryadd Wind Farm project, please provide your name and address on the below form and return it via freepost in the enclosed envelope. Please note you can Opt-Out of the service at any time by email to derryaddwindfarm@bnm.ie or by writing to: Derryadd Wind Farm, Bord na Móna Powergen, Newbridge, Co. Kildare.

For the purposes of data protection, please note that the only personal data that we hold will be your name and address. This will not be connected to any other personal data relating to you. Your contact details will be stored in a secure encrypted database on the Bord na Móna servers for the duration of the Derryadd Wind Farm project (or until you opt out of the service). Your details will only be used to send you postal updates with relevant project updates for the Derryadd Wind Farm project.

If you decide to opt-out at any time, your details will be securely deleted from our systems and you will no longer be contacted. Otherwise, your details will be deleted from our systems on completion of the Derryadd Wind Farm project. By submitting your name and address to us, you are consenting to allow us to use your information for the above purpose.

By submitting my contact details to Bord na Móna Powergen Ltd., I consent to allow them to use my information to send me relevant project updates via post for the Derryadd Wind Farm project.

PLEASE COMPLETE IN BLOCK CAPITALS.

Name:

Address:





Eircode:

Please return via the freepost envelope enclosed to:

Bord na Móna Renewable Energy, FREEPOST FNS109, Newbridge, Co. Kildare.



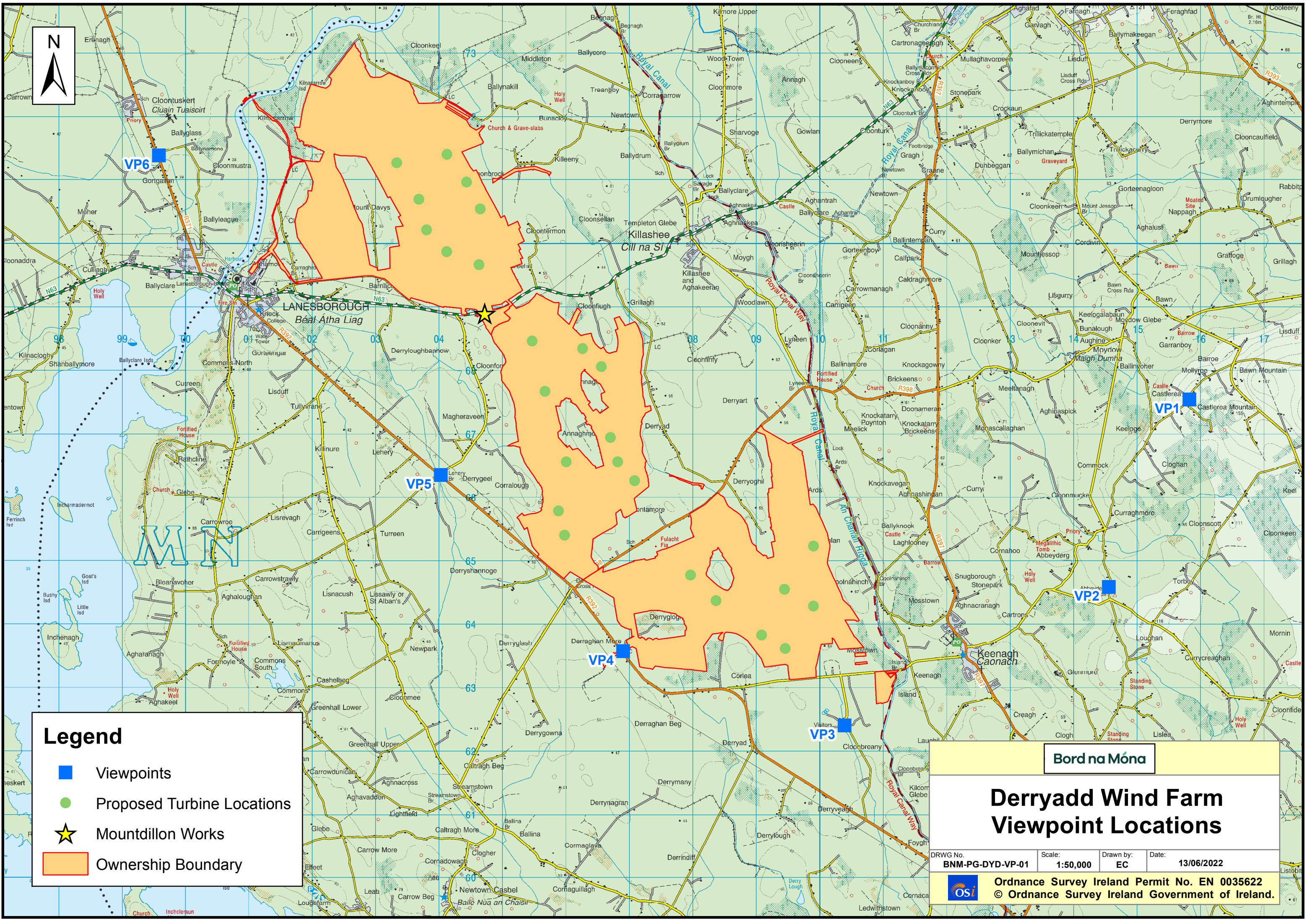
Legend

-  Viewpoints
-  Proposed Turbine Locations
-  Mountdillon Works
-  Ownership Boundary

Bord na Móna

Derryadd Wind Farm Viewpoint Locations

| | | | |
|---|--------------------|-----------------|---------------------|
| DRWG No. BNM-PG-DYD-VP-01 | Scale: 1:50,000 | Drawn by: EC | Date: 13/06/2022 |
| Ordnance Survey Ireland Permit No. EN 0035622 © Ordnance Survey Ireland Government of Ireland. | | | |

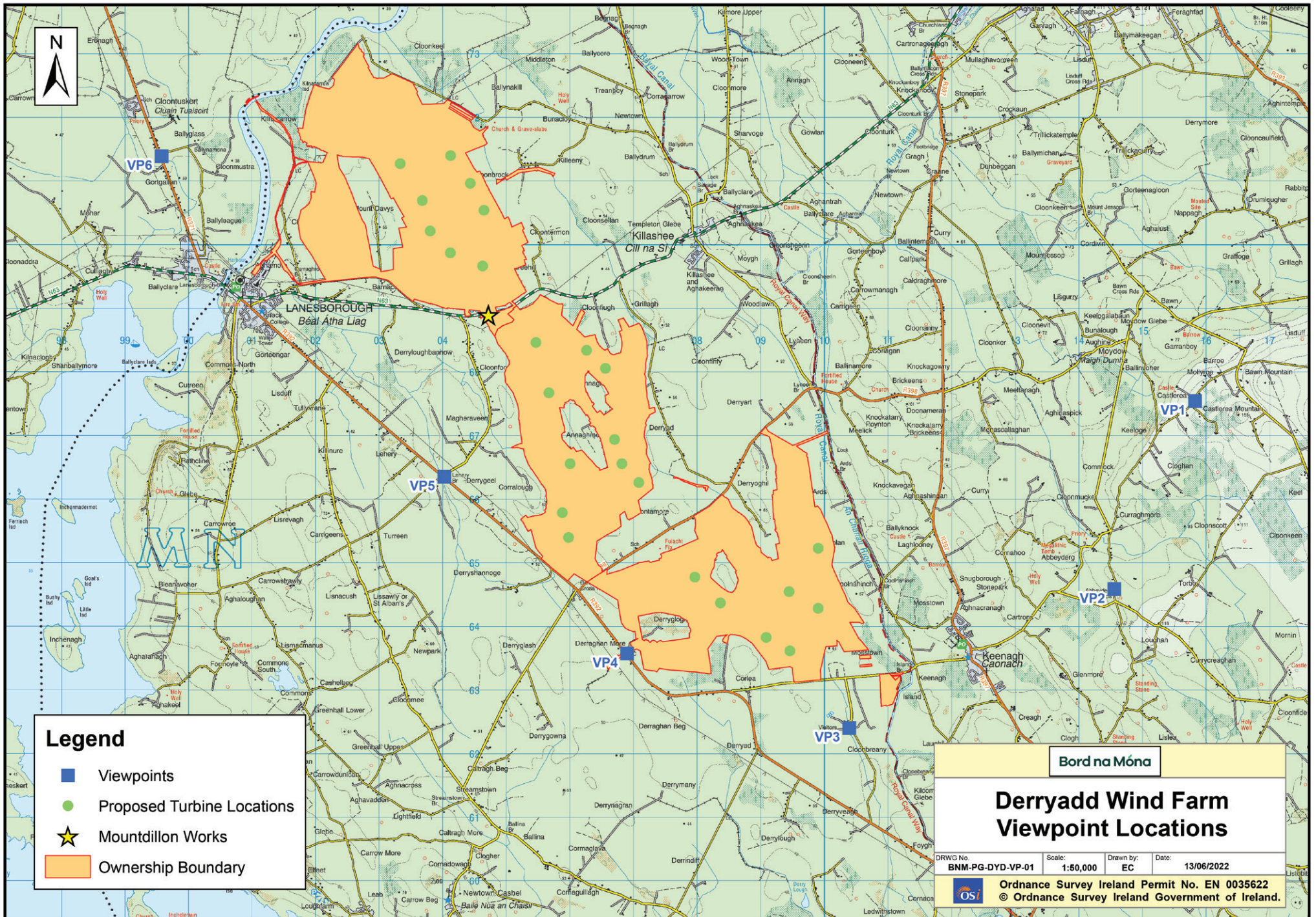


Photomontage Booklet for Proposed Derryadd Wind Farm

Summer 2022

Bord na Móna







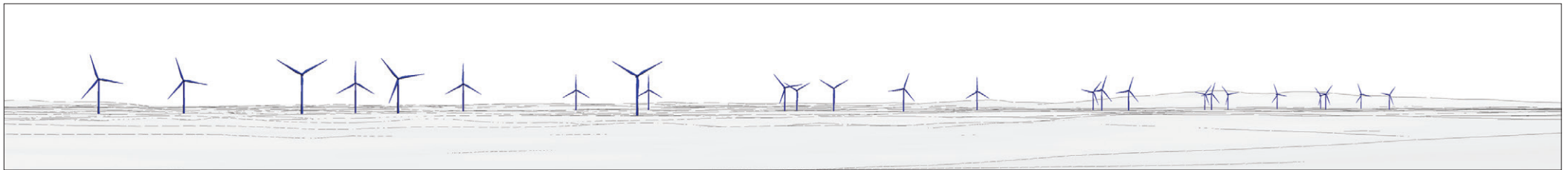
Viewpoint 1: View adjacent to local road west of Ardagh near Castlerea approximately 6km East of the proposed development. **VP1** on Viewpoint Locations map.

What is a photomontage?


A typical tool utilised in the assessment of the visual impact of a wind farm is a Photomontage. Photomontages are visualisations that superimpose an image of a proposed development upon a photograph or series of photographs and are used to illustrate the potential impact of a development on the existing landscape.

A number of photomontages will accompany the planning application as part of the Landscape and Visual Impact Assessment (LVIA) for the proposed wind farm. Within this booklet you will find samples of the photomontages which will form part of the LVIA for this proposed development. To view a larger copy of the viewpoint map shown here please refer to the A2 double sided map.

| Legend | |
|----------------------|--|
| Derryadd WF Turbines | |



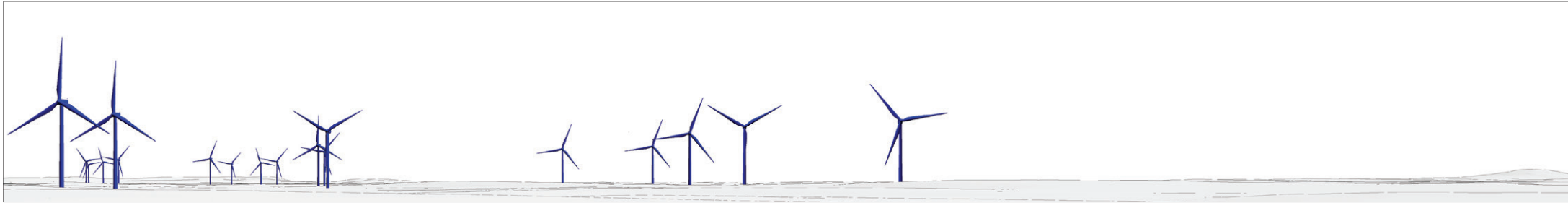
Viewpoint 2: View from road east of Keenagh near Abbeyderg Crossroads - approximately 4km Southeast of the proposed development. **VP2** on Viewpoint Locations map.

| Legend | |
|----------------------|---|
| Derryadd WF Turbines |  |

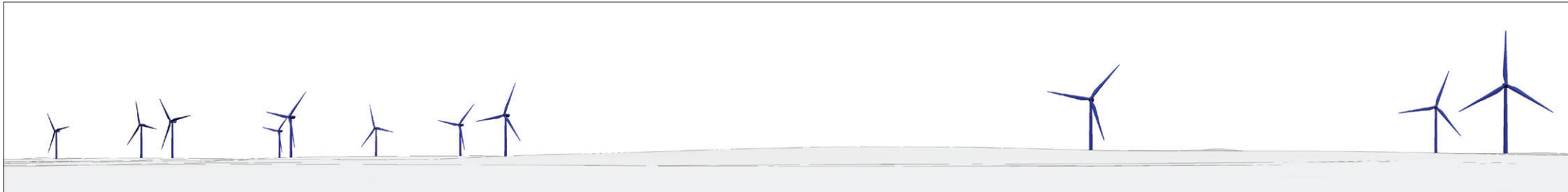


Viewpoint 3: View adjacent to Corlea Trackway Visitor Centre - approximately 1km South of the proposed development. **VP3** on Viewpoint Locations map.

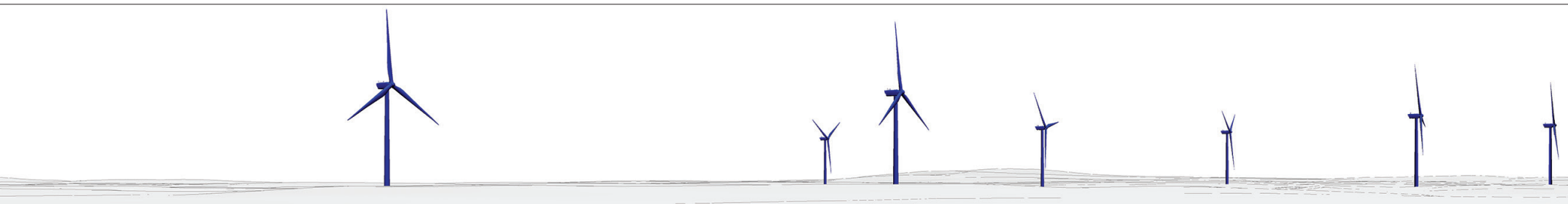
| Legend | |
|----------------------|--|
| Derryadd WF Turbines | |




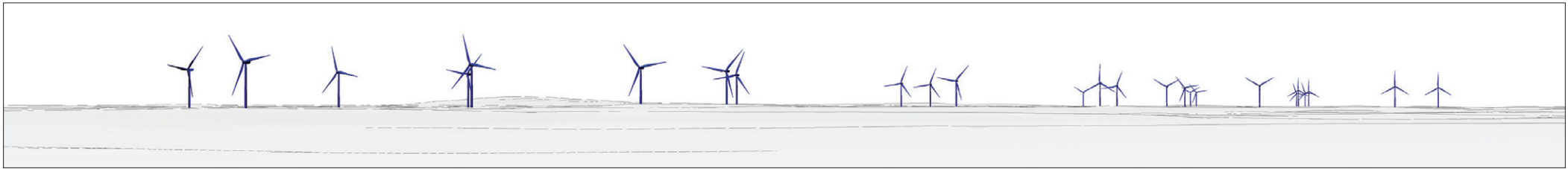
Viewpoint 4: View adjacent to Derraghan More near Bord na Móna level crossing approximately 0.25km Southwest of the proposed development. **VP4** on Viewpoint Locations map.




Viewpoint 5: View adjacent to Leherly Bridge - approximately 1.5km West of the proposed development. **VP5** on Viewpoint Locations map.



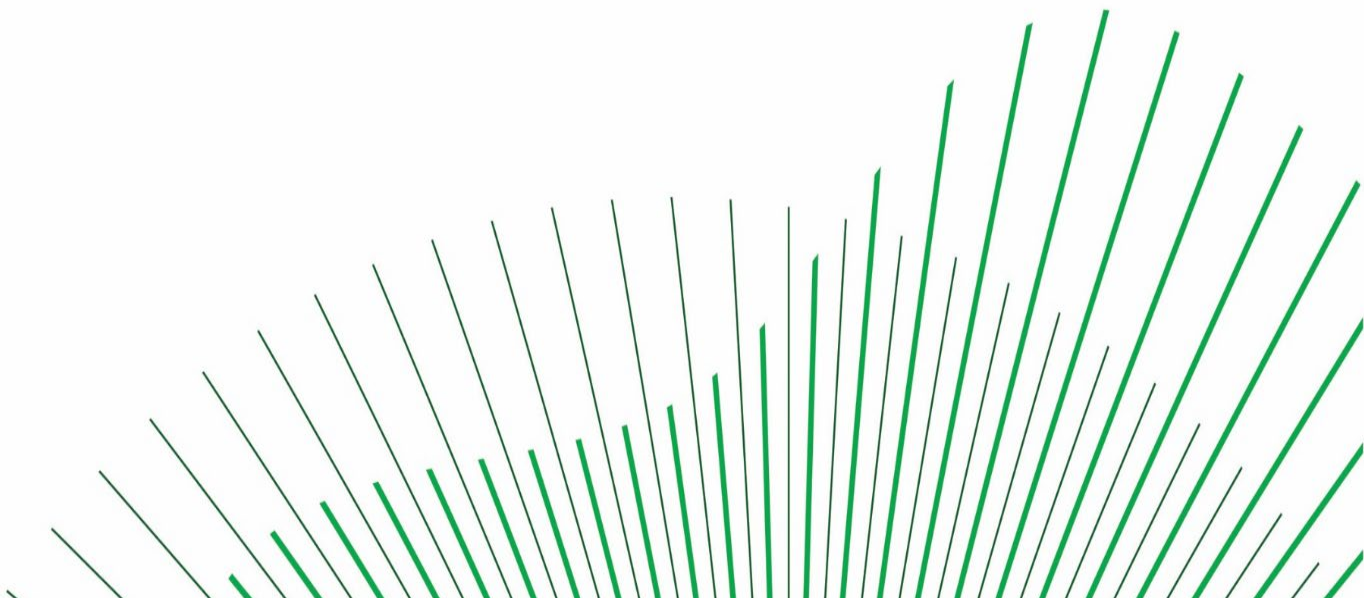
| Legend | |
|----------------------|---|
| Derryadd WF Turbines |  |

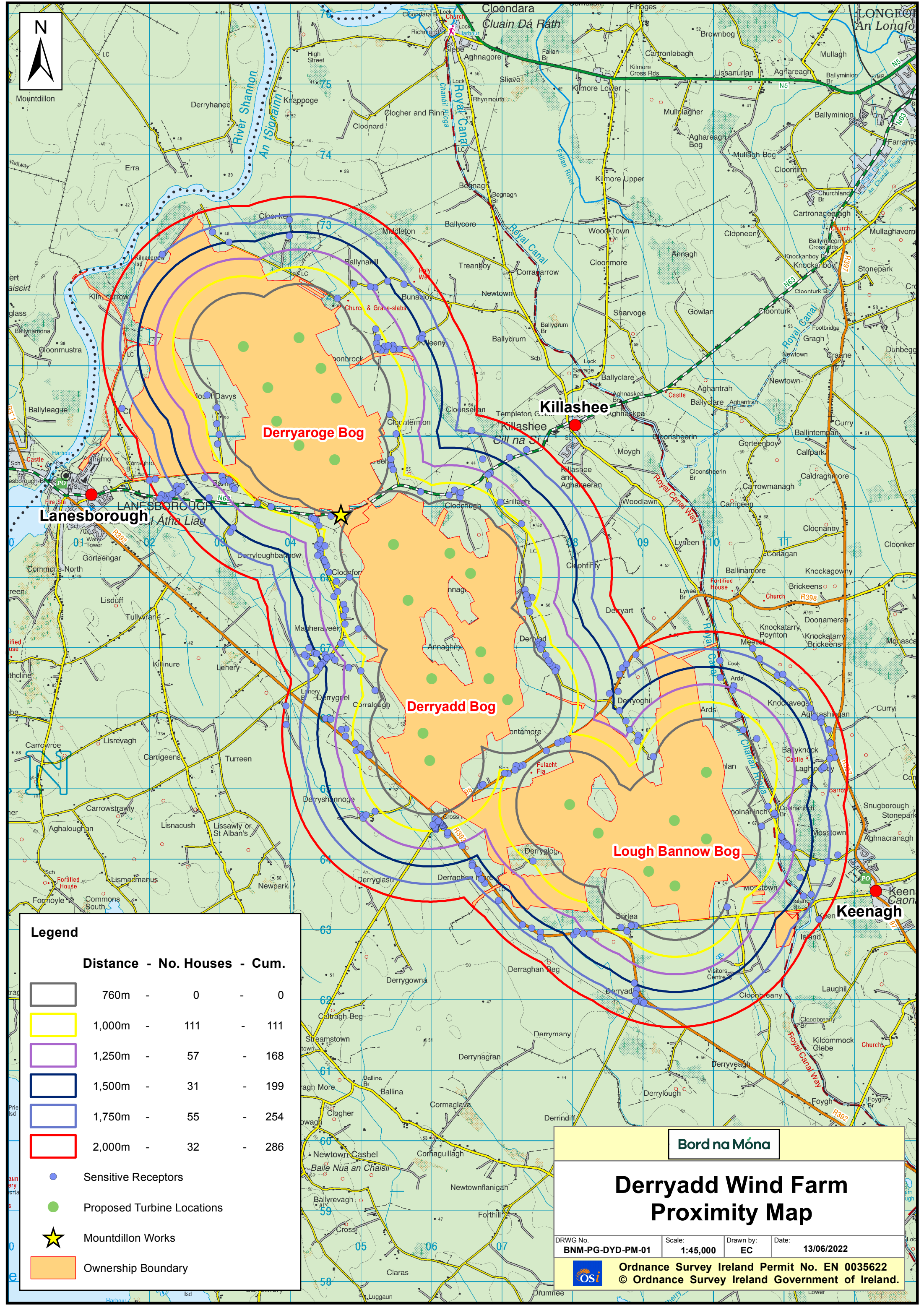


Viewpoint 6: View adjacent to Gortgallan - approximately 2.5km Northwest of the proposed development. **VP6** on Viewpoint Locations map.

| Legend | |
|----------------------|---|
| Derryadd WF Turbines |  |

Appendix B – Proximity Map for Draft Layout





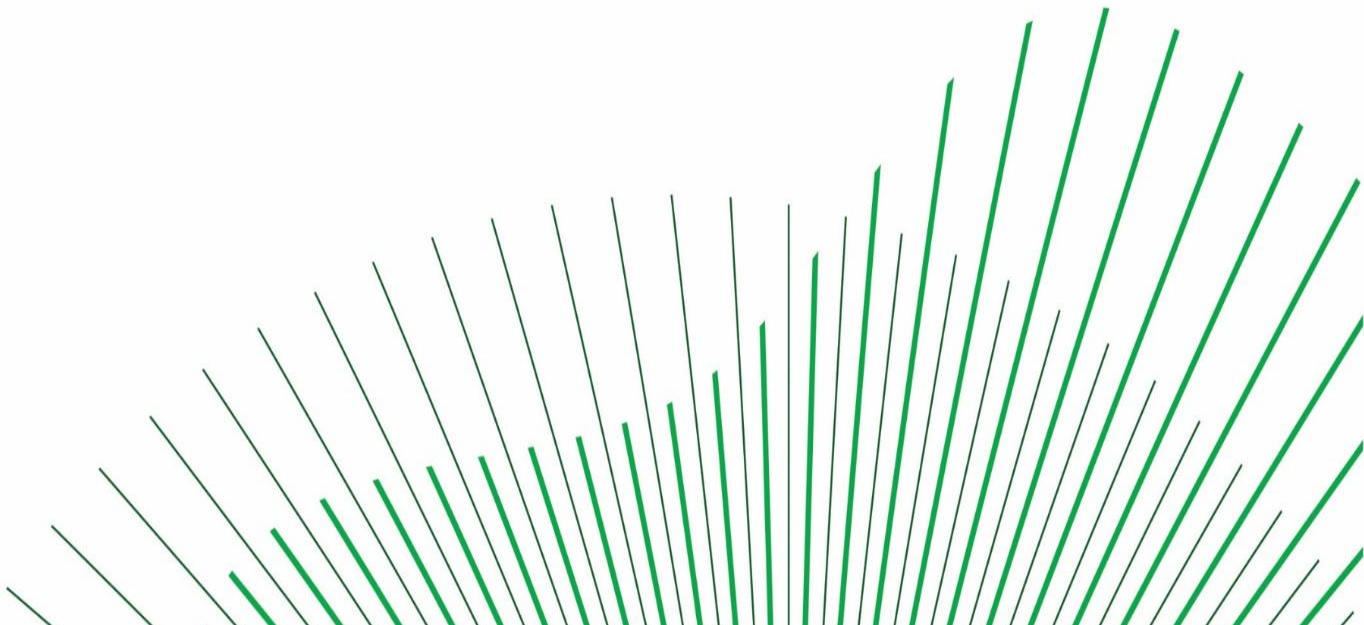
| Legend | | | |
|------------------------------|----------------------------|---|-----|
| Distance - No. Houses - Cum. | | | |
| | 760m | - | 0 |
| | 1,000m | - | 111 |
| | 1,250m | - | 168 |
| | 1,500m | - | 199 |
| | 1,750m | - | 254 |
| | 2,000m | - | 286 |
| | Sensitive Receptors | | |
| | Proposed Turbine Locations | | |
| | Mountdillon Works | | |
| | Ownership Boundary | | |

Derryadd Wind Farm Proximity Map

| | | | |
|------------------|----------|-----------|------------|
| DRWG No. | Scale: | Drawn by: | Date: |
| BNM-PG-DYD-PM-01 | 1:45,000 | EC | 13/06/2022 |

Ordnance Survey Ireland Permit No. EN 0035622
© Ordnance Survey Ireland Government of Ireland.

Appendix C – Final Layout, Infrastructure and draft Amenity Plan Map



Summer 2023

Dear Resident,

Project: Proposed Derryadd Wind Farm – Final Turbine Layout

The purpose of this communication is to provide you with an update on the proposed Derryadd Wind Farm. Firstly, we would like to thank everyone who submitted feedback and participated in our public consultation events conducted in 2022.

Since then, the project team has been advancing the project design and a final layout for the proposed development is now available. Accompanying this letter please find enclosed a double-sided map showing the final turbine layout and internal infrastructure for the proposed Derryadd Wind Farm.

The revisions to the layout are primarily associated with feedback from public consultation events held in 2022 and revisions to the site constraints arising from further studies. The revised proposal, for which Bord na Móna intend to submit a planning application in the summer of 2023, comprises 22 turbines with an overall tip height of 190 metres. It is also intended to construct an onsite electrical substation to facilitate a connection to the National Grid for the proposed development (see layout map for proposed location).

The proposed wind farm will consist of approximately 25km of internal road network, approximately 18km of which is intended for amenity use when the wind farm becomes operational. An additional c.7.5km of dedicated amenity trackway is also proposed to provide connectivity to local roads and allow local access to the wind farm amenity. The additional amenity track will also provide linkages between the wind farm internal road network and the royal canal greenway (to the east), the Corlea Visitor Centre and amenity areas (to the south), and wider proposed Mid-Shannon Wilderness Park Area.

The proposed turbine layout design has taken account of the requirements of the '*Current Wind Energy Development Guidelines (2006)*' which proposes a visual amenity setback of four times the turbine tip height between a wind turbine and the nearest residential property, subject to a mandatory minimum distance of 500 metres. The minimum setback distance applied for the proposed layout is 760m.

It is intended that the revised layout as shown on the enclosed maps will be submitted with the planning application - which is envisaged to be lodged in the summer of 2023. The maps may also be viewed on the project website at www.derryaddwindfarm.ie. Should there be any significant change to the proposed layout prior to submission we will keep you informed.

We will inform you directly when a planning application has been lodged for the proposed development. In the meantime, if you would like any further information on the proposed Derryadd Wind Farm please contact our Community Liaison Officer, James, on 087-7087022 or via Derryaddwindfarm@bnm.ie.

Yours faithfully,

Derryadd Wind Farm Communications Team



Legend

- Proposed Amenity Carparks
- Mountdillon Works
- Permanent Met Masts
- Derryadd WF Turbines
- Proposed Additional Amenity Links
- Proposed Amenity Pathway
- Proposed Substation Location
- Proposed Internal Wind Farm Roads
- Boundary

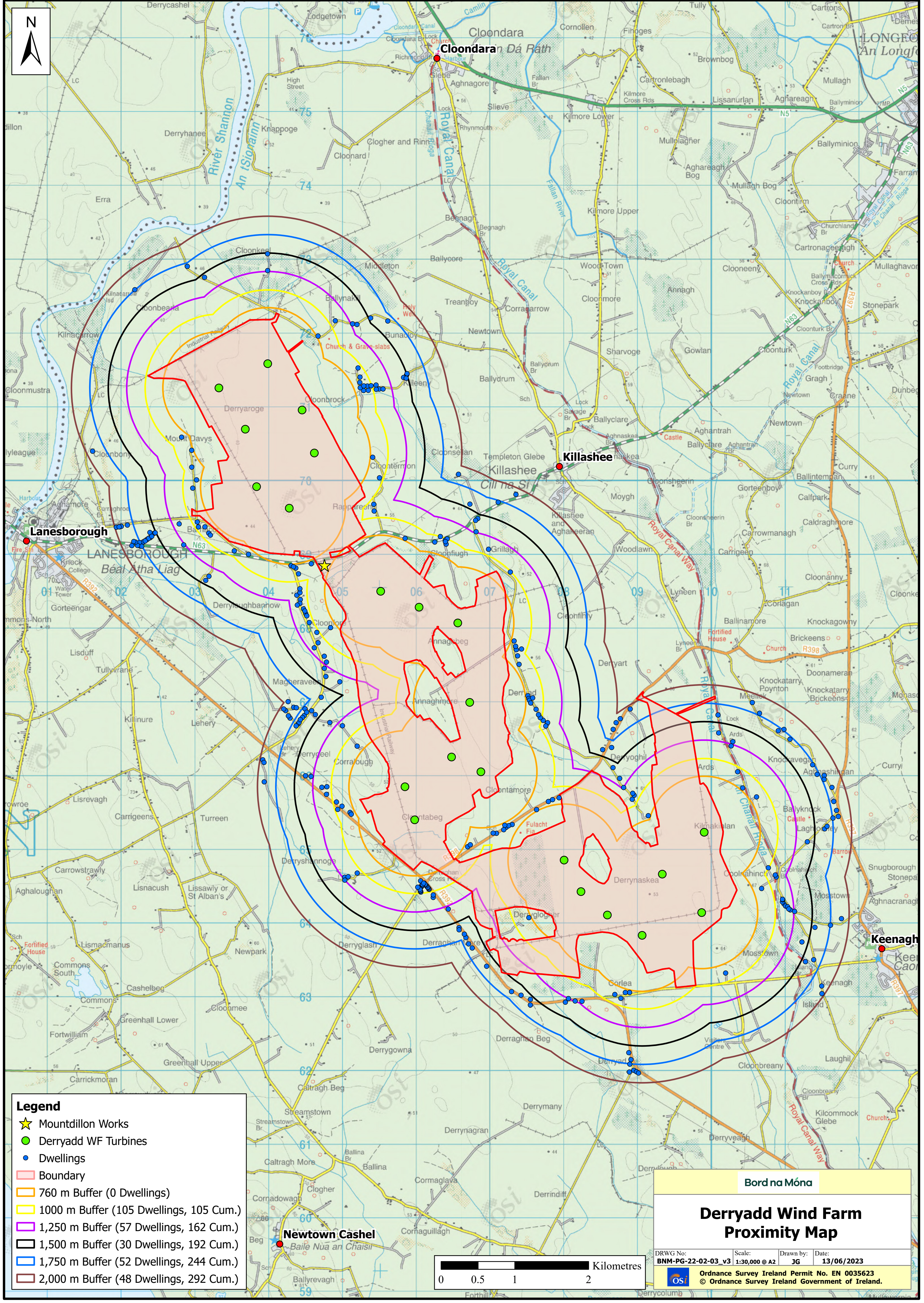


Bord na Móna

Derryadd Wind Farm Infrastructure Map

DRWG No: **BNM-PG-22-02-02_v3** Scale: **1:24,000 @ A2** Drawn by: **JG** Date: **13/06/2023**

Ordnance Survey Ireland Permit No. EN 0035623
© Ordnance Survey Ireland Government of Ireland.



Legend

- ★ Mountdillon Works
- Derryadd WF Turbines
- Dwellings
- Boundary
- 760 m Buffer (0 Dwellings)
- 1000 m Buffer (105 Dwellings, 105 Cum.)
- 1,250 m Buffer (57 Dwellings, 162 Cum.)
- 1,500 m Buffer (30 Dwellings, 192 Cum.)
- 1,750 m Buffer (52 Dwellings, 244 Cum.)
- 2,000 m Buffer (48 Dwellings, 292 Cum.)

Bord na Móna

Derryadd Wind Farm Proximity Map

| | | | |
|---------------------------------------|--------------------------------|------------------------|----------------------------|
| DRWG No: BNM-PG-22-02-03_v3 | Scale: 1:30,000 @ A2 | Drawn by: JG | Date: 13/06/2023 |
|---------------------------------------|--------------------------------|------------------------|----------------------------|

Ordnance Survey Ireland Permit No. EN 0035623
© Ordnance Survey Ireland Government of Ireland.